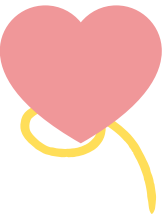


3RD GRADE FAMILY CHOICE BOARD

LITERACY



PHONICS

Comparative adjectives add **-er** to compare **TWO** nouns (harder)

Superlative adjectives are used to compare a group of objects.

You add **-est** to these. (hardest)

How many more comparative and superlative adjectives can you list and use in sentences?

FLUENCY

Read the following linked poem:

He Had a Dream

Read the poem aloud to a family member.

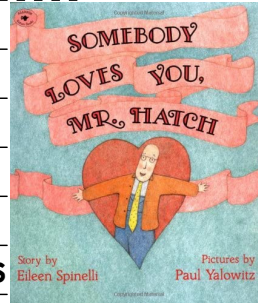
VOCABULARY

LISTEN TO "SOMEBODY LOVES YOU, MR. HATCH" LINKED [HERE](#)

LISTEN FOR INTERESTING WORDS

EX: ADMIRE

FIND 2 MORE!



COMPREHENSION

READ ALOUD A BOOK OR CHAPTER OF A BOOK.

AFTER READING, TALK ABOUT WHAT WAS READ.

WHAT WAS YOUR FAVORITE PART?

WHY WAS IT YOUR FAVORITE PART?

WHAT DO YOU THINK WILL HAPPEN NEXT?

RESEARCH

WATCH: [HOW TO CHANGE THE WORLD \(A WORK IN PROGRESS\) KID PRESIDENT](#)

CREATE A LIST OF FIVE THINGS YOU COULD DO TO CHANGE THE WORLD.

FEBRUARY



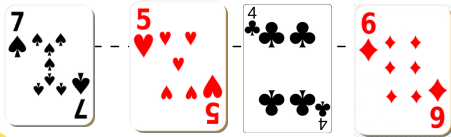
3RD GRADE FAMILY CHOICE BOARD

MATH

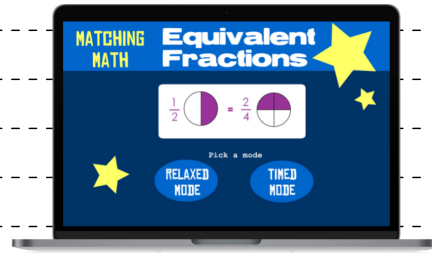
PLACE VALUE

Using a deck of cards, draw 4 cards

- Create a number using the cards
- Round the number to the nearest TEN.
- Then round the number to the nearest HUNDRED
- Create a new number using the cards and repeat.



PLAY THIS [GAME ONLINE](#) TO PRACTICE FRACTIONS ON A NUMBER LINE



PROBLEM SOLVING

Drew made 25 cards for his classmates. He then made 9 cards for his family. If he received 45 cards on Valentine' Day, how many more cards did he receive than what he made?

NUMBER DETECTIVES

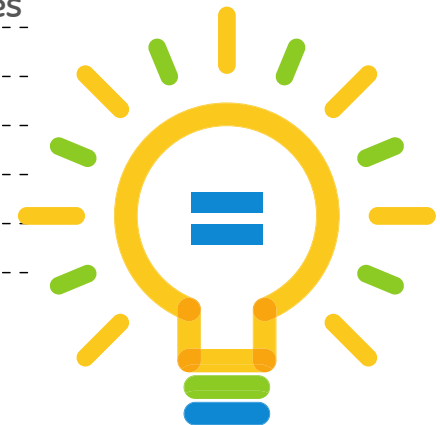
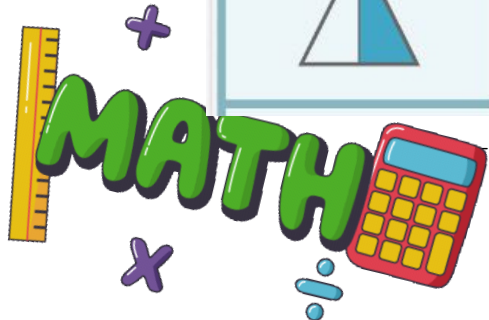
Identify the fractions of each shape shaded below.



MATH AROUND US

Create word problems that include real life scenarios using the names of your family members.

Have someone at home solve your problems.



FEBRUARY