

5TH GRADE FAMILY CHOICE BOARD



MORPHOLOGY

GREEK ROOT

MACRO = LARGE

LATIN ROOT

FEND = STRIKE

THINK OF AS MANY WORDS AS YOU
CAN THAT HAVE THIS ROOT
EX: MACROFOSSIL

FLUENCY

READ THE POEM ONLINE

"FALLING SNOW"

READ THE POEM ALOUD TO
FAMILY MEMBERS.

VOCABULARY

LISTEN TO

"SNEEZY THE SNOWMAN"

LINKED [HERE](#)

LISTEN FOR
INTERESTING WORDS

EX:

SHIVERING

FIND 2 MORE!

COMPREHENSION

READ ALOUD A BOOK OR
CHAPTER OF A BOOK.

AFTER READING, TALK ABOUT
WHAT WAS READ.

WHO WERE THE CHARACTERS?
WHAT HAPPENED IN THE BEGINNING,
MIDDLE AND END?

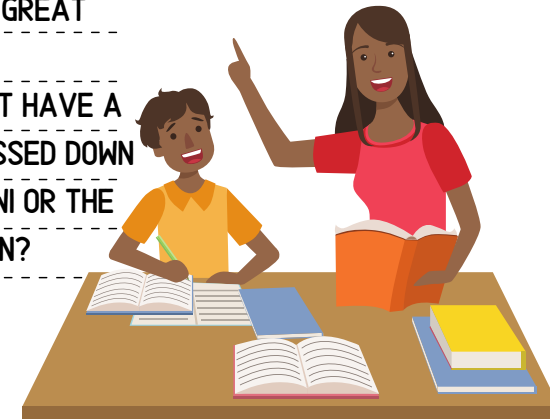
RESEARCH

TELL A PARENT OR ADULT ABOUT
WHAT YOU HAVE LEARNED ABOUT
WORLD WAR I OR THE GREAT
DEPRESSION.

DID YOUR PARENT/ADULT HAVE A
GRANDPARENT THAT PASSED DOWN
ANY STORIES ABOUT WWI OR THE
GREAT DEPRESSION?



JANUARY

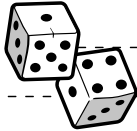


5TH GRADE FAMILY CHOICE BOARD

MATH GAMES

PLACE VALUE

ROLL TWO DICE. MAKE ONE DIE THE NUMERATOR AND ONE DIE THE DENOMINATOR. REPEAT, ADD THE TWO FRACTIONS TOGETHER, WHAT IS THE SUM?



MULTIPLICATION WAR
 TO BEGIN, PLAYERS FLIP TWO PLAYING CARDS FACE UP. THEN THEY MULTIPLY THE TWO NUMBERS ON THE CARDS TOGETHER.

WHOEVER HAS THE HIGHEST PRODUCT KEEPS THE CARDS. AT THE END OF THE GAME, THE PLAY WITH THE MOST CARDS WINS.

PROBLEM SOLVING

A HOTEL HAS 7 FLOORS. THE LOBBY, RESTAURANT AND GYM ARE LOCATED ON THE GROUND FLOOR. THE GUESTROOMS ARE ON 1ST TO 6TH FLOORS. IF THERE ARE 35 STANDARD ROOMS ON EACH FLOOR, HOW MANY STANDARD ROOMS ARE THERE?

NUMBER EQUATIONS

$$16 \times 2.4 =$$

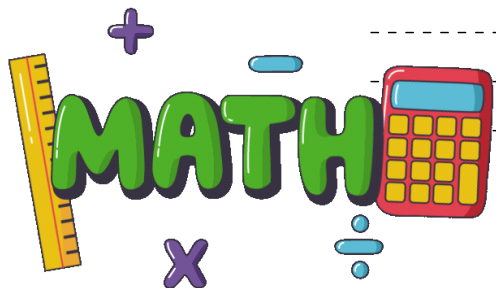
$$3,453 \div 63 =$$

$$16.5 \div 3 =$$

MATH AROUND US

CREATE WORD PROBLEMS THAT INCLUDE REAL LIFE SCENARIOS INVOLVING FRACTIONS AND USE YOUR NAME OR A FAMILY MEMBER'S NAME.

EX: ALEX HAS $\frac{1}{3}$ OF A BOX OF CHOCOLATES. A FULL BOX HAS 18 CHOCOLATES. HOW MANY CHOCOLATES DOES ALEX HAVE?



JANUARY

