



Word Study Virtual Learning

2nd Grade Word Study

Soft g

April 6, 2020



2nd Grade Word Study

Lesson: April 6, 2020

Learning Target:

Students will be able to understand that g says /j/ when followed by an e, i, or y.

Background: This is a review lesson from 2nd Grade

- Students will be able to expand their knowledge of spelling patterns and letter-sound correspondence.
- Students will be able to understand that g says /j/ when followed by an e, i, or y.

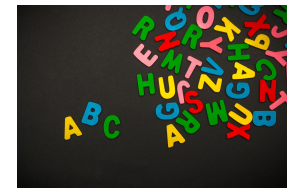
Let's Get Started:

Watch Videos:

1. [Turtle Diary-- soft g](#)
2. [Soft g Song](#)

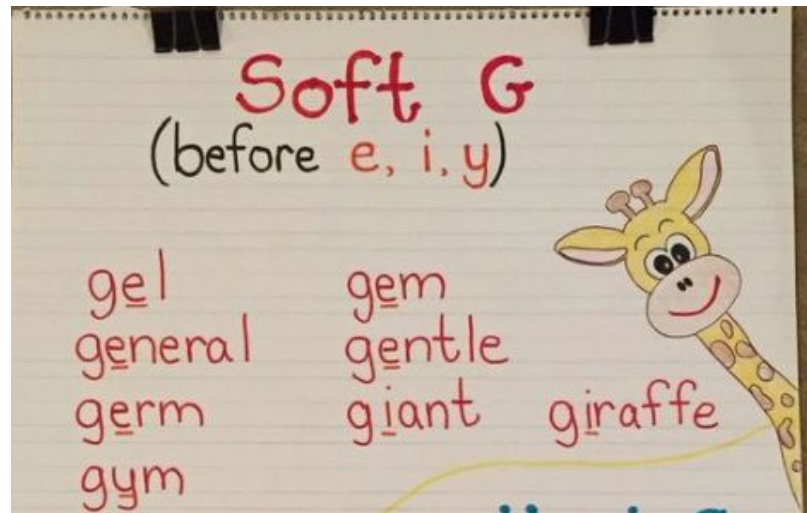
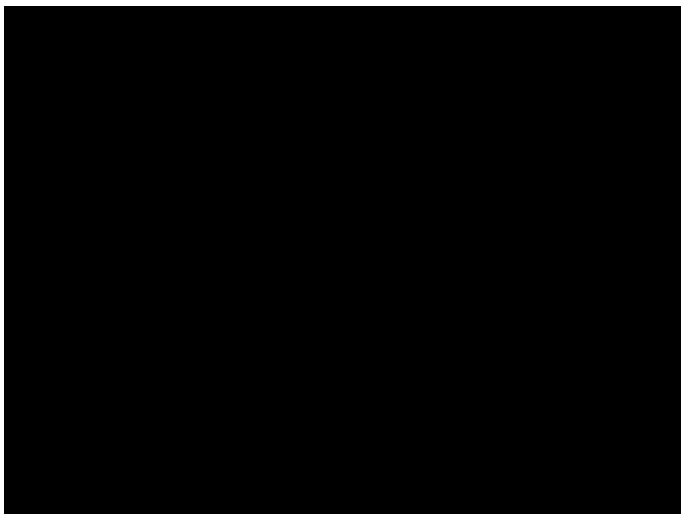
2nd Grade Word Study

Soft g



green, its, giant, magic, large, danger, orange, germ, over, part

Click on the video to learn about Soft G



Practice:

Complete 3 activities from the menu below

<p>Rainbow Write Use crayons, colored pencils or markers to write your words. Make each letter of the word a different color.</p>	<p>Word Hunt See how many of your words you can find during your weekly reading. Write them down along with the title of the book you found them in.</p>	<p>Practice Test Take a practice test with a buddy. If you missed any words, rewrite them 3 times.</p>
<p>Trace It! Use your finger to write your words in a dish of sugar, sand or shaving cream! Have fun!</p>	<p>Story Time Write a story using 4 of the words from the list.</p>	<p>Picture It! Choose 6 of your words. Draw pictures to illustrate them. Write the word underneath each picture</p>
<p>Flash Cards Make flashcards to help practice your words</p>	<p>Build It! Using items around your house spell the words (playdoh, M&Ms, string, etc)</p>	<p>Sentences Write sentences using your 6 words. Be sure to write complete sentences and underline the words.</p>

Online Practice:

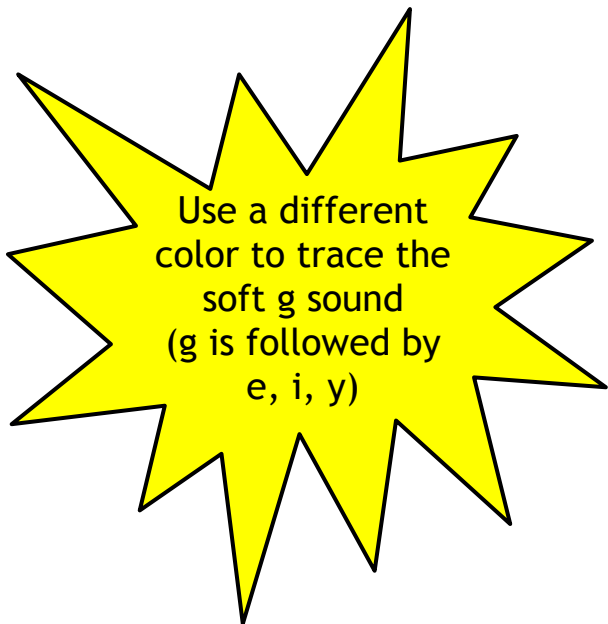
Play 2 of the games below.

[Click here to play the free games on Spelling City.](#)



Extra Practice:

Complete page to practice this week's words.



Name: _____ Date: _____

Soft g Week of 4/6/20

green

its

giant

magic

large

danger

orange

germ

over

part

Click here to open worksheet.



Extra Practice:

Complete page to practice this week's words.

Name: _____

Date: _____

Soft g Week of 4/6/20

Missing Letter

Circle the letter that best completes the word.

1) gia_t

l n
k c

7) ov_r

k e
f r

2) or_nge

w x
u a

8) gre_n

d a
e h

3) _arge

r u
p l

9) _agic

m e
z x

Click here to open
worksheet.



Self Check:



1. Was this lesson?

- easy,
- just right
- hard

2. Go spell 3 of your words to someone in your home

Printable Sheets for Packet

[Word Study Printable 4-6](#)