



Math Virtual Learning

2nd grade Time

April 7, 2020



2nd grade Math

Lesson: April 7, 2020

Learning Target:

Students will say the time shown on a digital clock saying the hour and the minute and relate it to an analog clock with the same time.

Background: Students are learning time to the quarter hour.

- Students will learn to tell time to the quarter hour.
- Students will be able to talk about A.M. related to morning and P.M. relating to evening.

Let's Get Started:

Watch Videos:

1. [Learn to read time A.M. and P.M.](#)
2. [Lets learn how to tell time](#)
3. [Brain Pop Jr. Time to the quarter and half hour](#)

Practice #1:

What do you notice about these clocks?



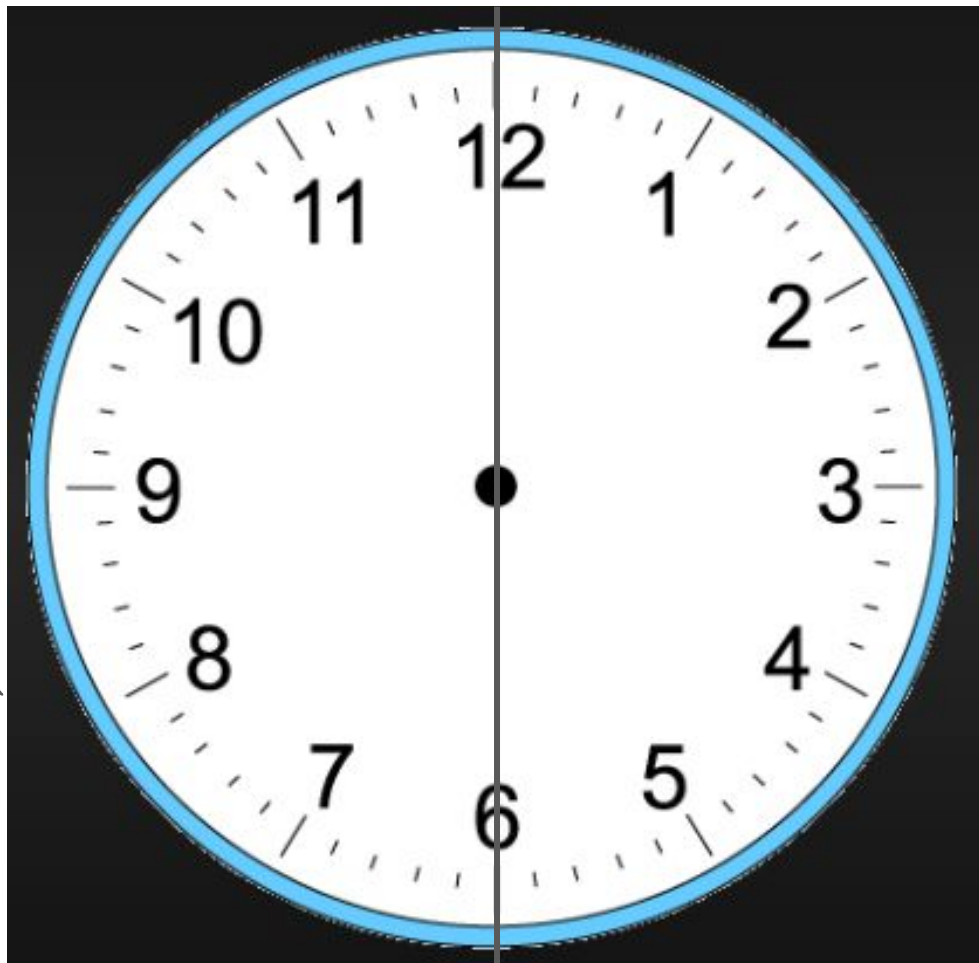
Practice #1:

The clocks are showing all different times.



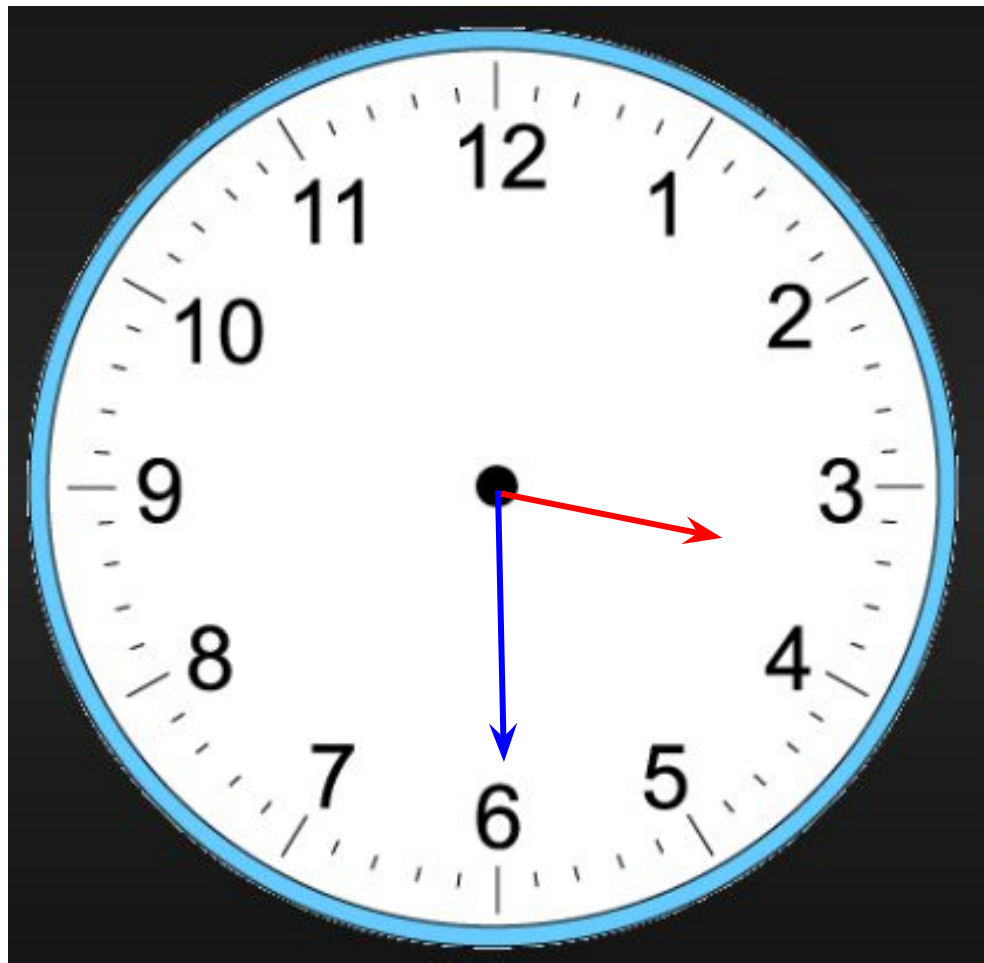
Practice #2:

The clock is divided in 2 parts. So when the minute hand is on the 6, we say it is “half past” the hour.

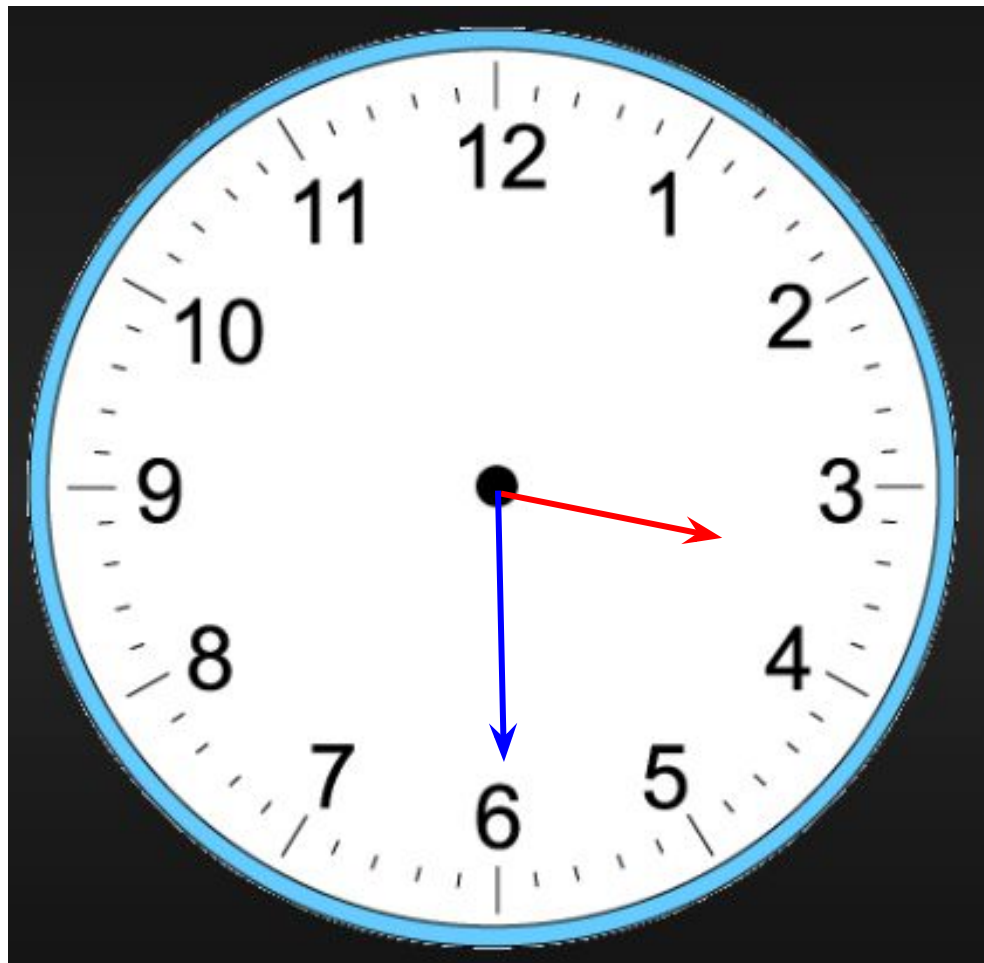


What time
does the clock
say?

3:30

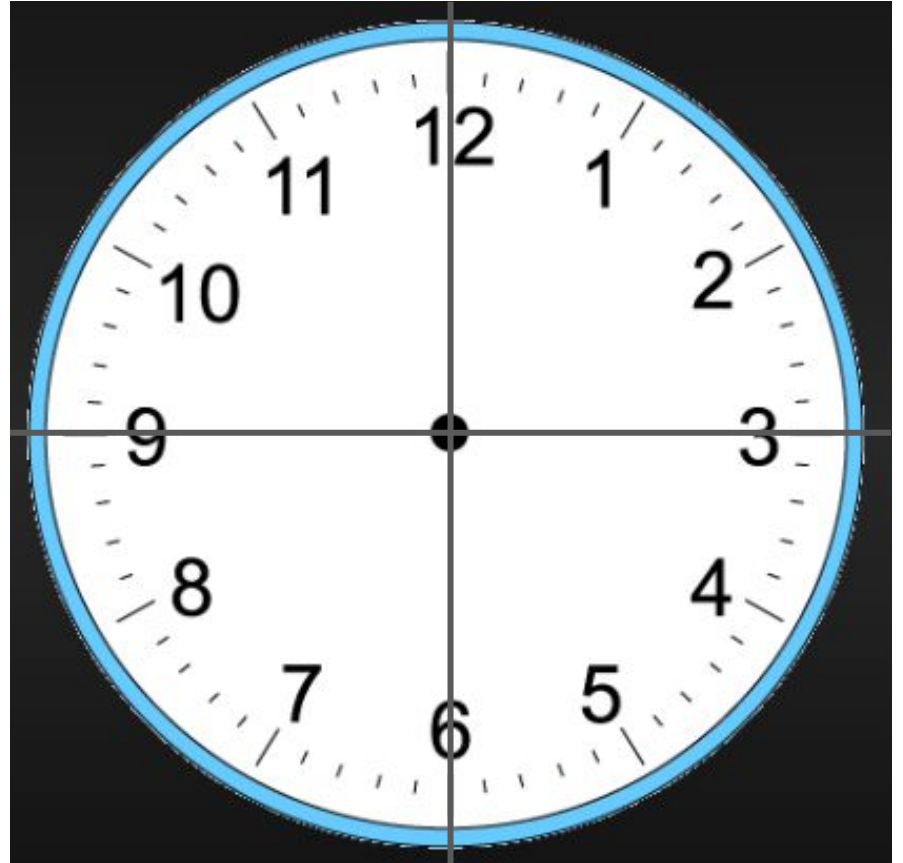


Both clocks
say 3:30

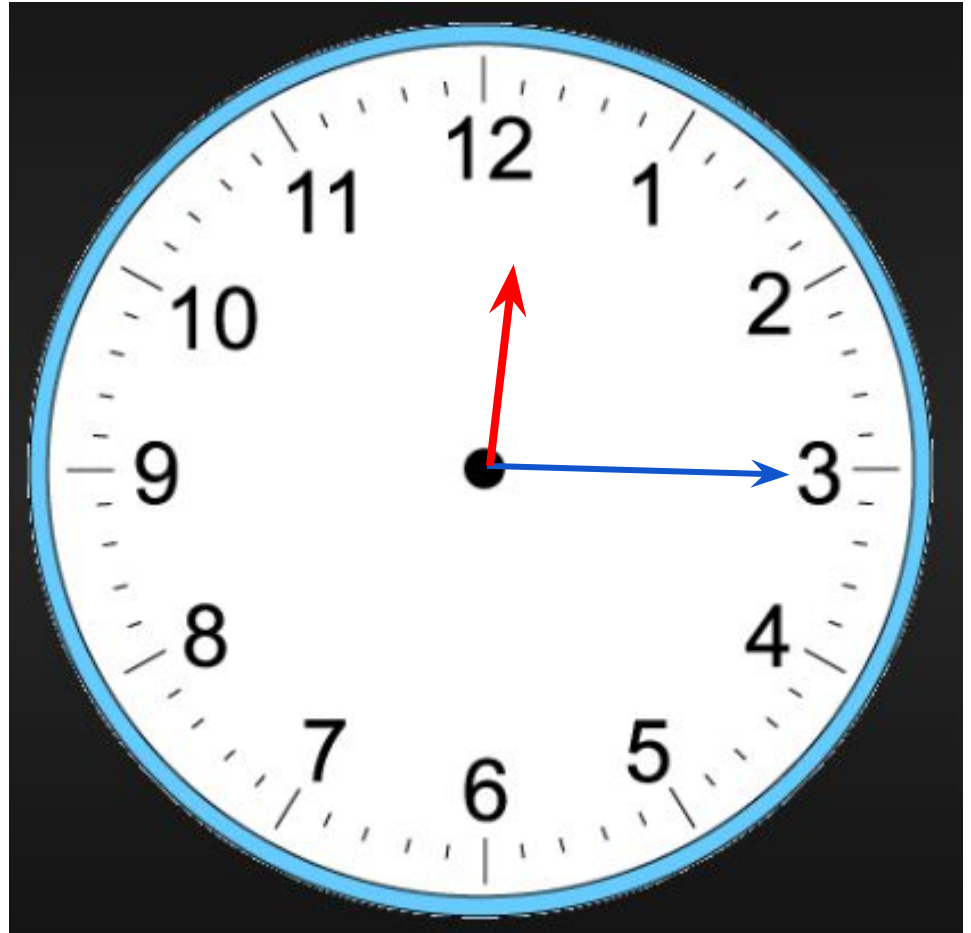
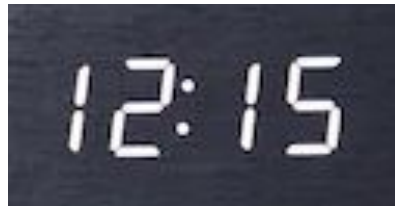


Practice #3:

Now the clock is divided in 4 pieces or quarters. So when the minute hand is on the 3, we say it is a quarter past the hour.

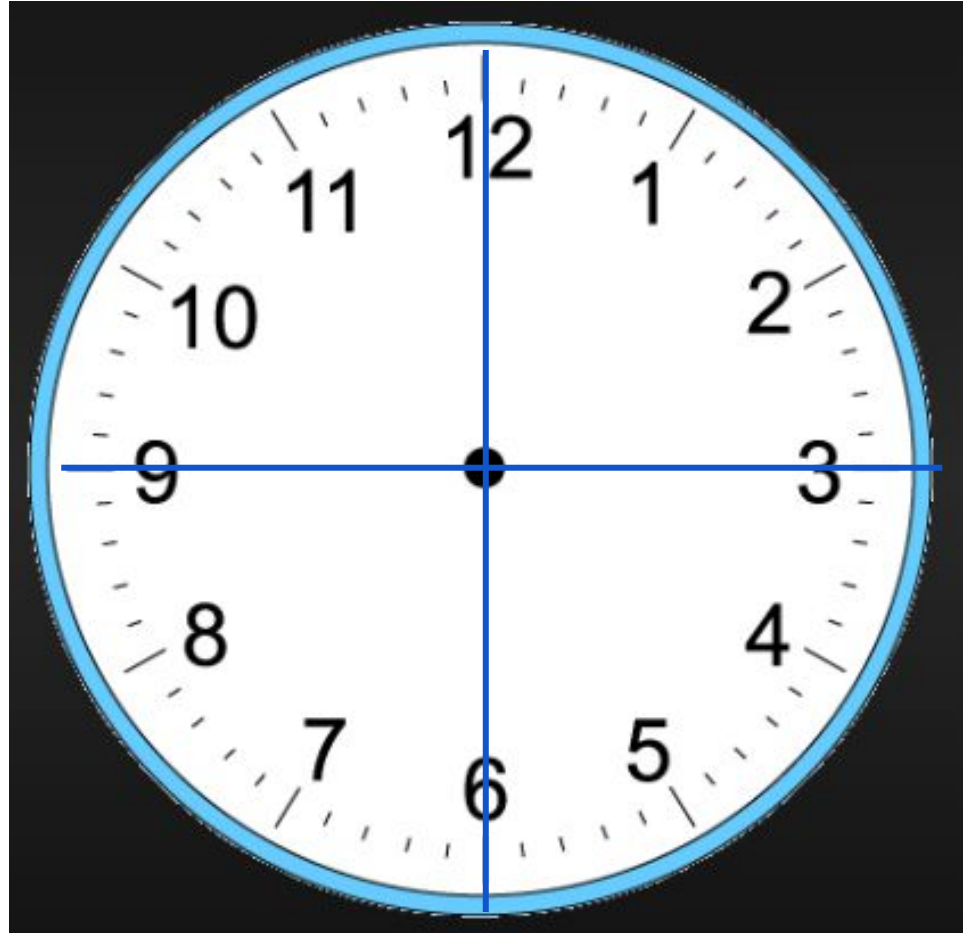


Now the clock is divided in 4 pieces or quarters. So when the minute hand is on the 3, we say it is a quarter past the hour.



Practice #4:

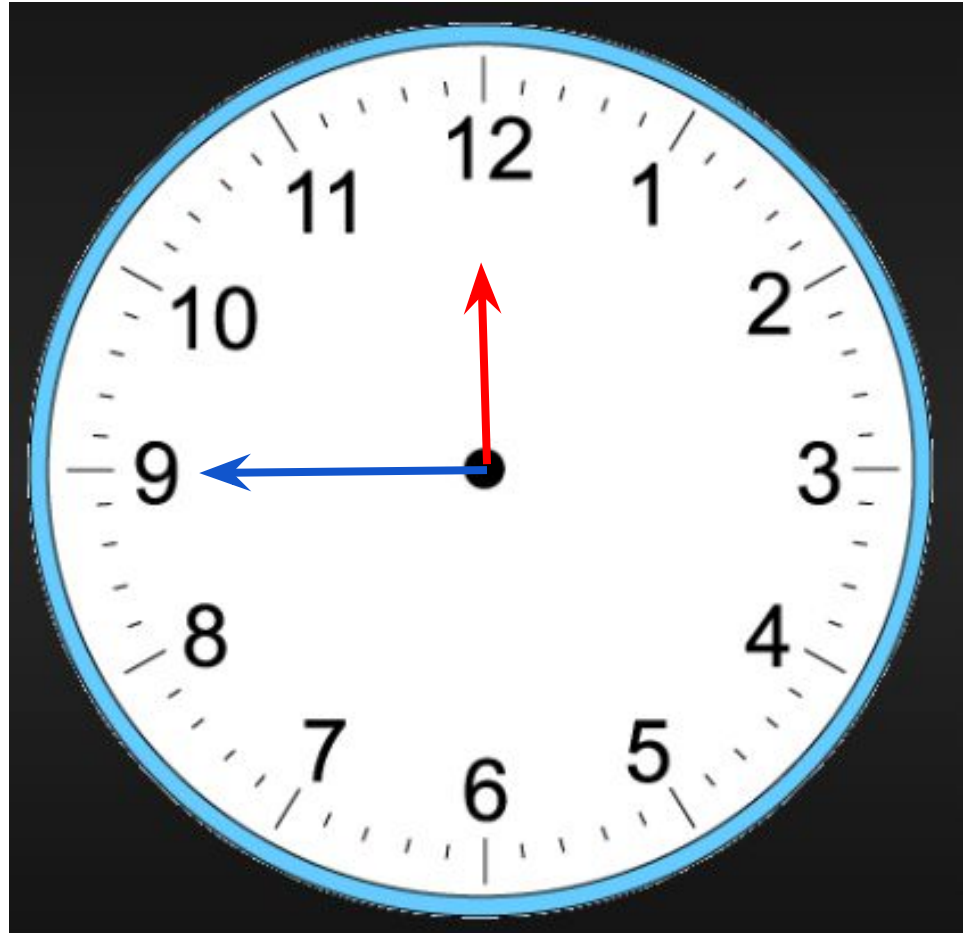
Now the clock is divided in 4 pieces or quarters. So when the minute hand is on the 9, we say it is a quarter till the hour.



Now the clock is divided in 4 pieces or quarters. So when the minute hand is on the 9, we say it is a quarter till the hour.



11 : 45



Practice #5:



What time
do the
clocks say?
Remember
to say
quarter till
or quarter
past the
hour

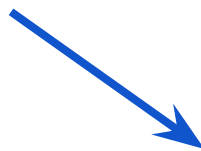




← Quarter till 3



Quarter past 9



Practice #6:

What time are these clocks saying?

Match the digital clocks to the analog clocks.





12:45

6:30

9:15



Practice #7:

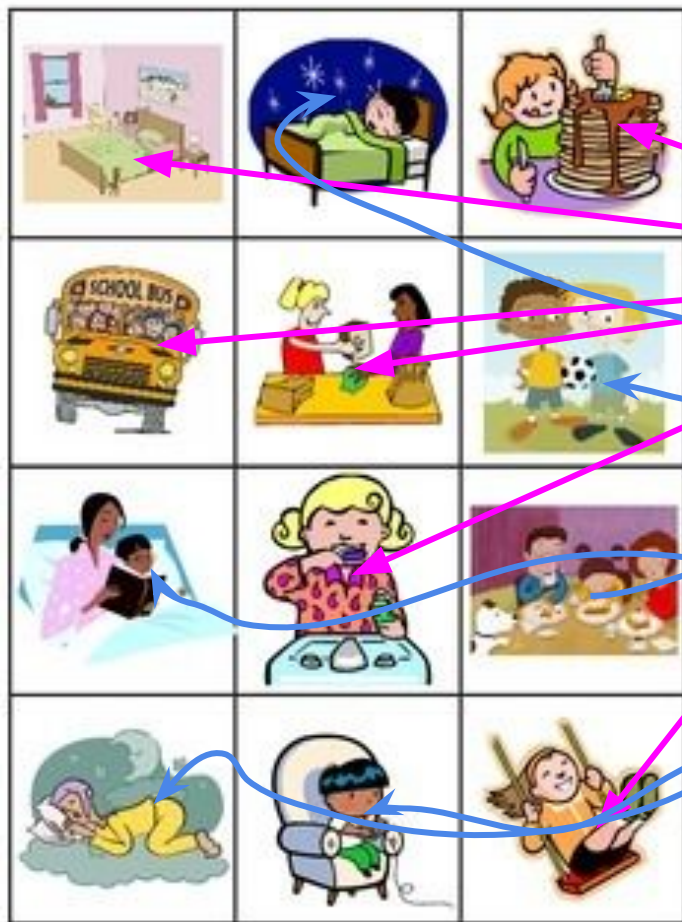


What time of the day is it? A.M. or P.M.?

We think of A.M. as daytime.
However, it is from midnight
(middle of the night) to 11:59 A.M.
or 1 minute until noon (lunch
time).

We think of P.M. as night time.
However, it is from noon (lunch
time) until 1 minute before
midnight (middle of the night or
12 P.M.).





A.M.

P.M.

Practice on your own: A.M. and P.M. practice!

Gather a piece of paper and a writing utensil (pencil, marker, crayons, pen).

1. Fold your paper in half like a hamburger then again in half. Open your paper up and now you have 4 sections.
2. Draw 2 pictures (or write words) of something you would do in the A.M. and two things you might be doing in the P.M.
3. Go show it to a grown up in your house.

MORE Practice on your own:

Go to this website:

[Learn to tell time](#)

1. Click the green triangle then the white arrow to begin.
2. Choose practice or #1.
3. Choose the digital clock and press the white arrow to begin.

Pay attention to the A.M. and P.M.!



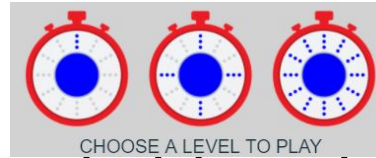
MORE Practice on your own:

Go to this website:

[Time clock](#)



1. Scroll down until you see this and press the play now.
2. Choose the middle level.
3. Read the time at the top and either change the arrows or with your mouse move the clock hands.
4. Press the white arrow to go to the next question.



Complete the exit ticket.

Name: _____

Exit Ticket

Show the time from the analog clock on the digital clock.



Show the time from the digital clock on the analog clock.



Self Check:

Go tell someone in your home your answers.



1. Was this lesson?

- ☐ Easy 
- ☐ just right 
- ☐ hard 

2. Find a clock or a watch and tell a grown-up what time it is.