



Science Virtual Learning

2nd Grade

Growth of Plants

April 14, 2020



## 2nd grade Science

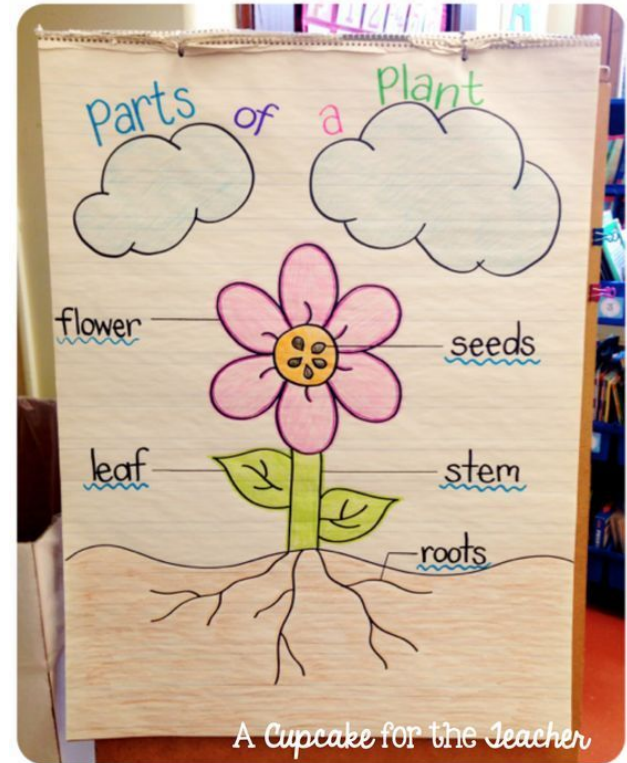
### Lesson: April 6th

### **Learning Target:**

1. Students will identify cause and effect by working with one variable at a time.
2. Students will carry out the scientific process.
3. Students will identify the basic needs of plants.

# Background: Review this vocabulary before starting today's lesson!

- **Roots:** part of the plant that attaches to the ground
- **Stem:** main body or stalk of the plant
- **Leaves:** flattened, thin blades that are attached to the stem
- **Flower:** attractive, seed bearing part of the plant



Click in the box below to listen to a song  
about the parts of plant!

Think about  
the **jobs** that  
each plant  
part does!

Click Here!

[The Parts of a Plant](#)



# Let's Get Started!

Watch this BrainPOP Jr. video on the parts of a plant and the roles they fill!

Think about the **jobs** that each plant part does!

Click Here!

[Parts of a Plant Video](#)



## Engage: Practice #1

Classify: What part of the plant is this?

A tree trunk is a \_\_\_\_\_.

- a. root
- b. stem
- c. flower
- d. leaf





## Engage: Practice #1

Classify: What part of the plant is this?

CORRECT!

A tree trunk is a really big **stem**!



## Engage: Practice #1

Classify: What part of the plant is this?

A celery stalk is a \_\_\_\_.

- a. root
- b. stem
- c. flower
- d. leaf

This part!





## Engage: Practice #1

Classify: What part of the plant is this?

CORRECT!

A celery stalk is a **stem**  
that you can eat!

This part!



## Engage: Practice #1

Classify: What part of the plant is this?

A carrot is a \_\_\_\_\_.

- a. root
- b. stem
- c. flower
- d. leaf





## Engage: Practice #1

Classify: What part of the plant is this?

CORRECT!

A carrot is a **root**! It is the part that holds the plant in the ground!

That root sure is yummy!



## Engage: Practice #1

Classify: What part of the plant is this?

A broccoli is a \_\_\_\_\_.

- a. root
- b. stem
- c. flower
- d. leaf



## Engage: Practice #1

Classify: What part of the plant is this?

CORRECT!

A broccoli is the **flower** part of the plant!

This is a **flower** that you eat!





## Engage: Practice #1

Classify: What part of the plant is this?

Each tiny little bud on a broccoli plant is actually a **tiny yellow flower bud**!

Here is a picture of one that is blooming!



## Engage: Practice #1

Classify: What part of the plant is this?

A lettuce is a \_\_\_\_.

- a. root
- b. stem
- c. flower
- d. leaf



## Engage: Practice #1

Classify: What part of the plant is this?

CORRECT!

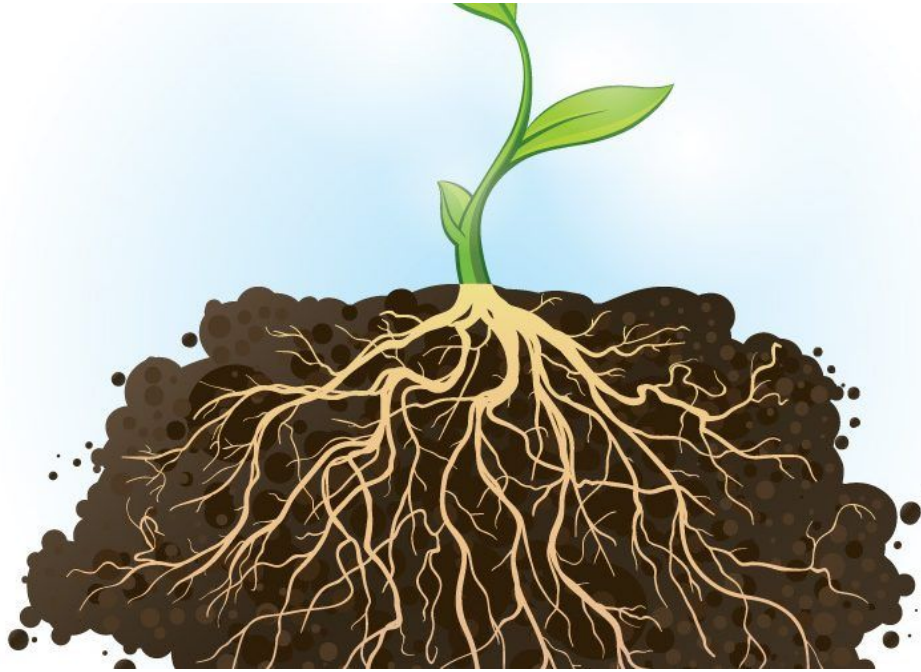
Lettuce is the **leaf** part of this plant.

Lettuce is a **leaf** you can eat!



# Practice #2: Engage

What do roots do?



They **hold a plant in the ground**, and keep it from blowing away.

They **keep dirt in the ground**, to keep the dirt from washing away.

They **collect water** for the plant.

# Practice #2: Engage

What do roots do?



You can think of roots like a **sponge**! They soak water up out of the ground!

This protects land from flooding!



## Practice #2: Engage

What do roots do?



You can also think of roots like an **anchor**!

An anchor keeps the boat from being washed away by waves!

Roots keep a plant from being washed away by rain!

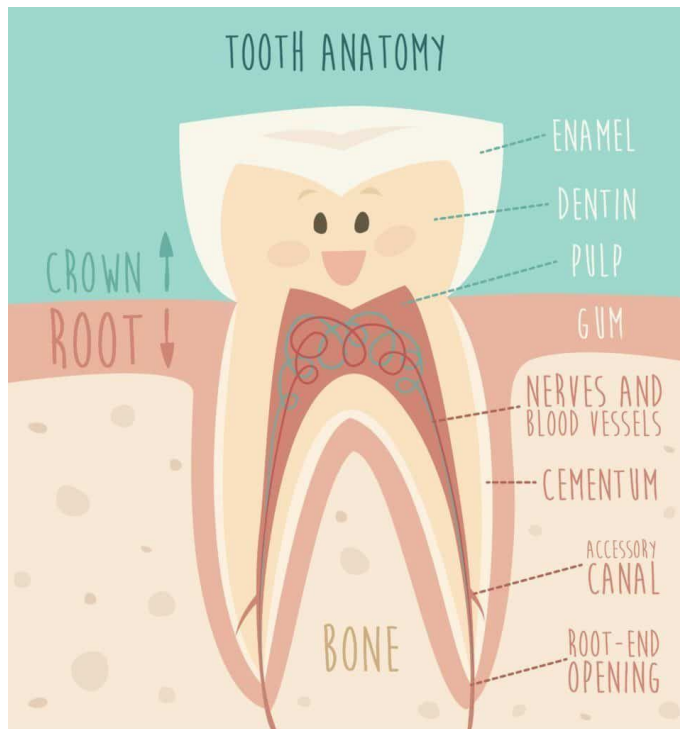
# Practice #2: Engage

## Did you know you have roots?

The part of the tooth you brush and eat with is called the “crown”.

But there is a hidden part under your gums!

(Just like roots are hidden under the ground!)



They hold your teeth in so they do not fall out!

(Don't worry, your baby teeth are SUPPOSED to fall out! Your new adult teeth do not! Because roots hold them in! )

# Practice #2: Engage

Stem: Bring the water up!

**A stem has two jobs:**

**Give Structure:** A stem holds the plant up straight!

**Pump Water:** A stem brings the water up to the rest of the plant!



# Practice #2: Engage

Stem: Bring the water up!

You can think of a stem like a **straw**! A stem can bring water up like you can with a straw!



# Explore:

Try this experiment with celery!

See if the colors  
come up the stem,  
or stay in the cups!

Make a hypothesis!  
What do you think  
will happen?

Click Here!

[Celery Experiment](#)





# Practice #2: Engage

## Leaves: What do they do?

Leaves make the sugar that a plant needs for **energy**!

They do this through a process called photosynthesis using the sun's light.



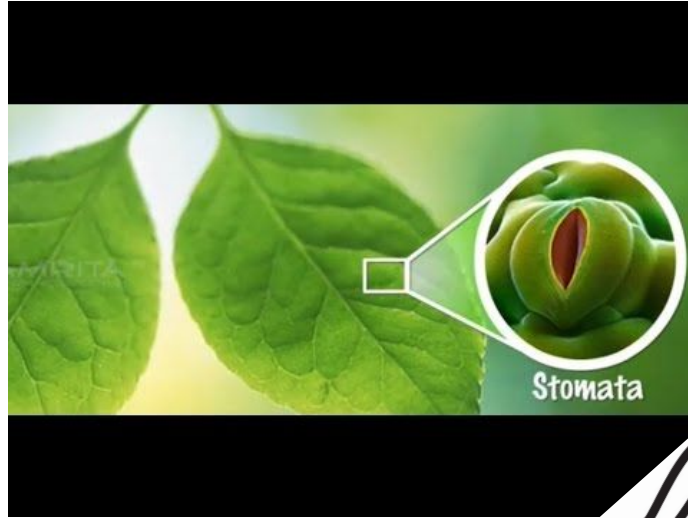
Leaves also let in air through teeny tiny holes we cannot see called **stomata**.

Plants take in carbon dioxide, and let out oxygen.

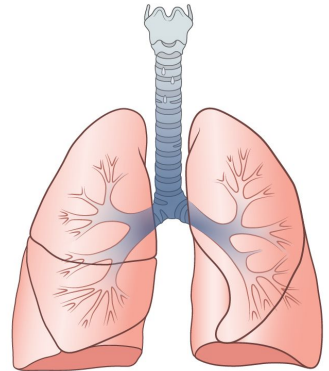
# Practice #2: Engage

## Leaves: What do they do?

You can think of leaves as **tiny chefs!** They **make the food** for the plant!



You can think of stomata like your **mouth and lungs** that can let air in and out to **breathe**.



# Practice #2: Engage

## Flowers: What do they do?

Flowers **make seeds** for the plant.

These are a plant's babies! (Awww)

Flowers **make pollen**.  
Bees collect it!

Pollen helps a flower make seeds!

They look and smell pretty! It's their job to **attract bees and birds**.

Some kinds of flowers can **make fruit**.



Click Here!

[Daisy Timelapse video](#)

# Explain: Create your own plant art!



Substitute your own materials as needed.

Have fun creating your own plant!

Think about the jobs each part does as you build it.

# Elaborate!

Practice on your own

Use everything that you learned to fill out the jobs for each plant part!

Use what you learned to fill out the chart based on what jobs each part of the plant does for the plant!

Part of the Plant	Job that Part Does
flower	
leaves	
stem	
root	

# Self Check:

Go tell someone in your home your answers.



1. Was this lesson \_\_\_\_\_ ?

☐

easy

☐

just right

☐

hard

1. Find 5 things inside or outside of your house. Decide if they are living or nonliving!