



Science Virtual Learning

4th Grade

Science Review

April 7, 2020



4th Grade Science Review

Lesson: April 7th, 2020

Learning Target:

Students will explain and show that over time, patterns in rock formation and fossils in rock layers can change a landscape.

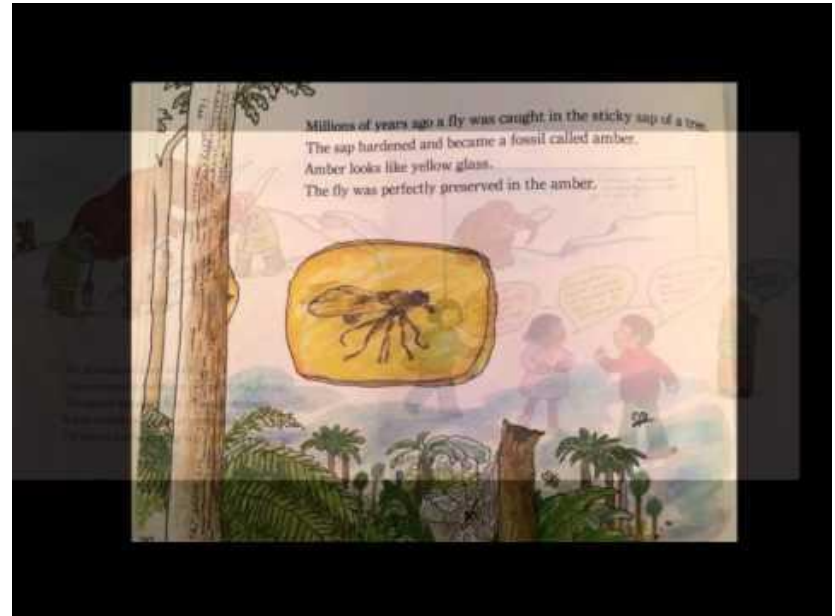
Background: This is a review lesson from the Reducing Impacts Unit: History of the Earth's Surface

- Students can explain and show that over time, patterns in rock formation and fossils in rock layers can change a landscape.

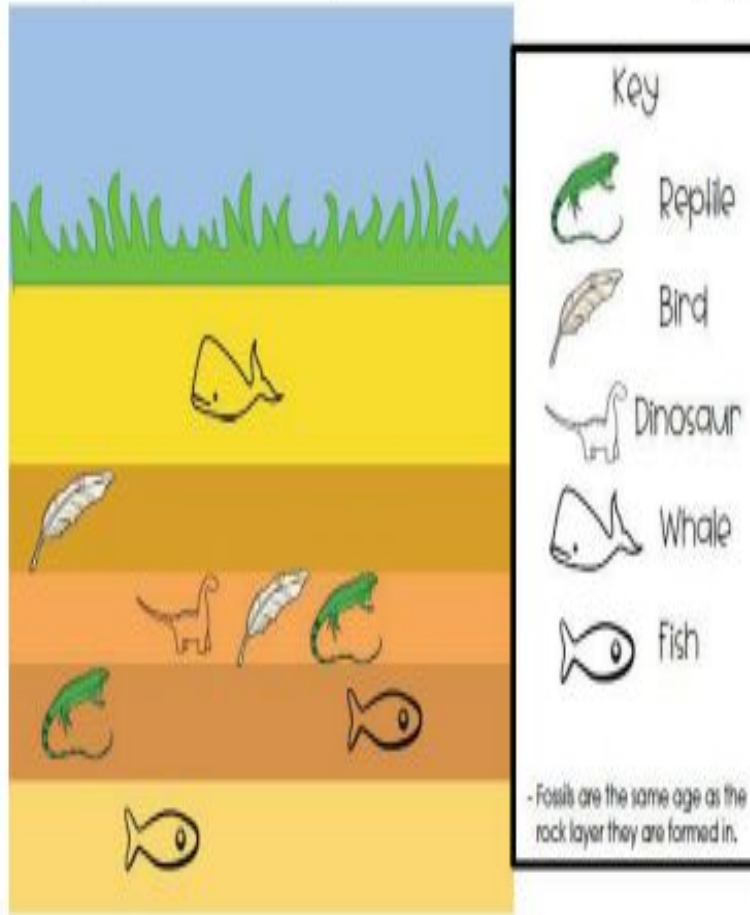
Let's Get Started:

Watch Videos:

1. [Anchor Lesson](#)
2. [Brain Pop-Fossils](#)
3. Fossils Tell of Long Ago
 - a. Video on this slide



Directions: Use the diagram and the key to answer the following questions.



Practice:
Study the picture on this slide, you will need this information on the next slides.

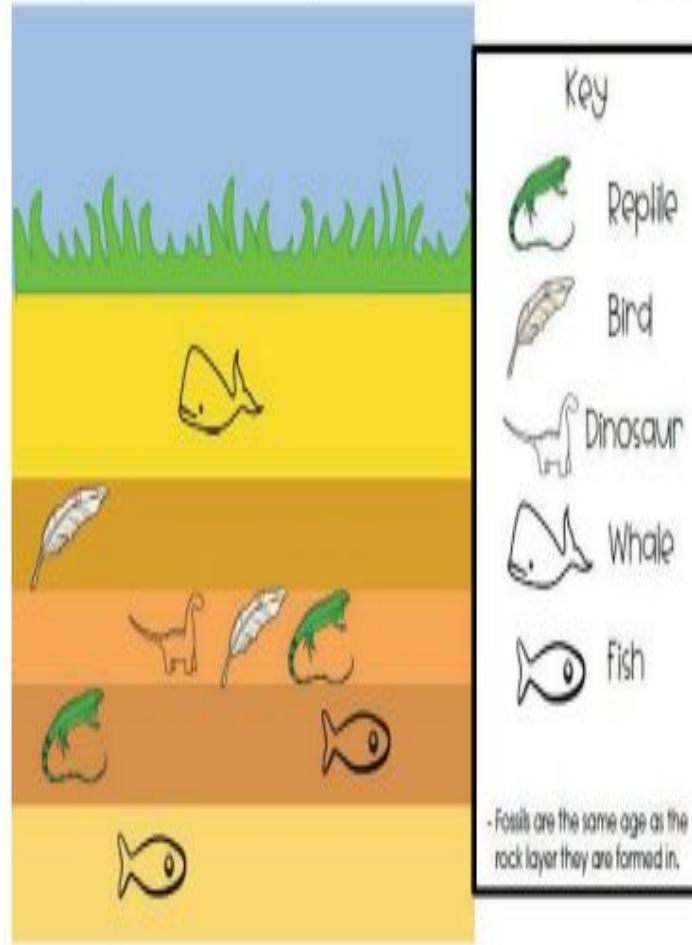
Remember that the fossils are the same age as the rock layer they formed in.

Directions: Use the diagram and the key to answer the following questions.

Practice 1

Which fossil do you think is the oldest? WHY do you think that?

Remember that the fossils are the same age as the rock layer they formed in.

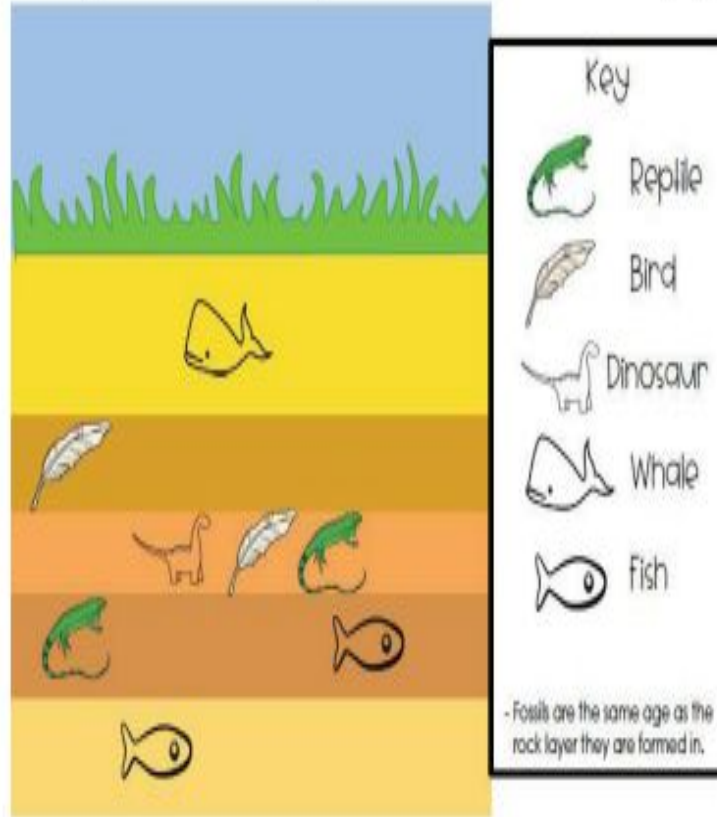


Practice #1 answer:

Directions: Use the diagram and the key to answer the following questions.

If you said
FISH --you
are correct!

The fish is buried
in the deepest
layer of the
earth, making it
the oldest fossil.

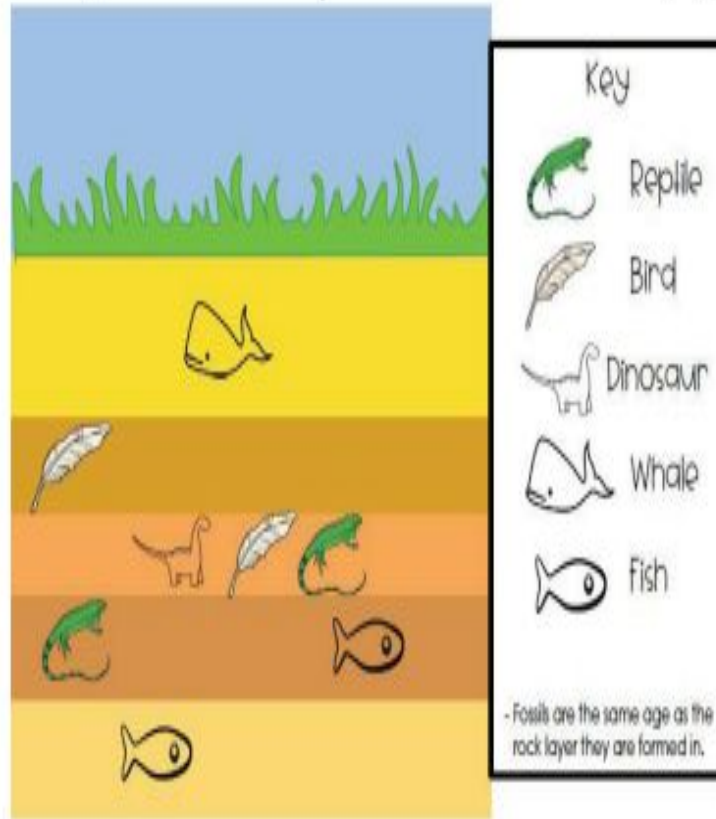


Practice #2:

Directions: Use the diagram and the key to answer the following questions.

Which fossil is the youngest?

Remember that the fossils are the same age as the rock layer they formed in.



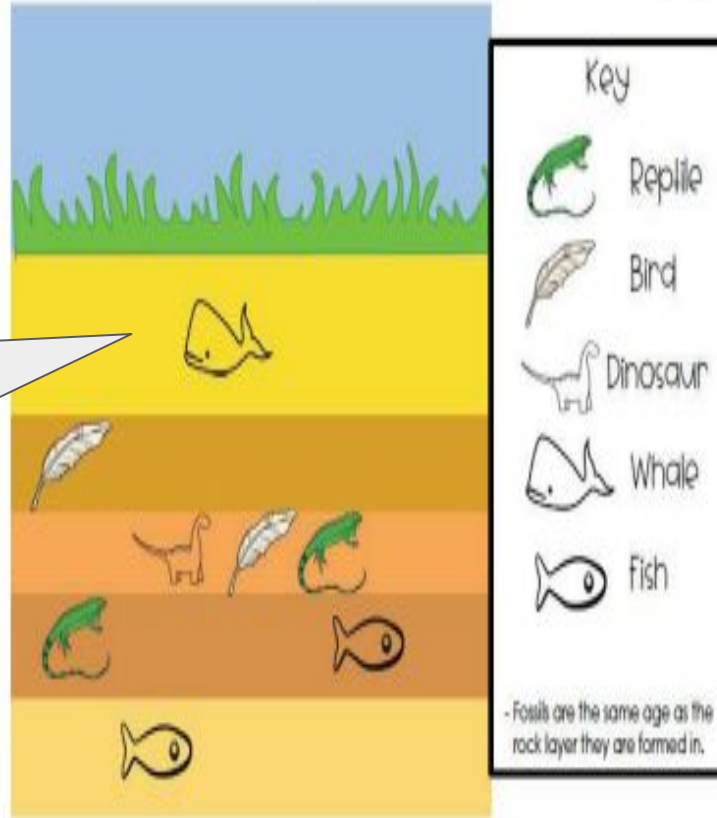
Practice #2 answer:

Directions: Use the diagram and the key to answer the following questions.

If you said
WHALE --you
are correct!

Why? Because
the whale fossils
are found in the
top most layer
of earth, making
it the newest
addition.

*Remember that the fossils
are the same age as the
rock layer they formed in.*

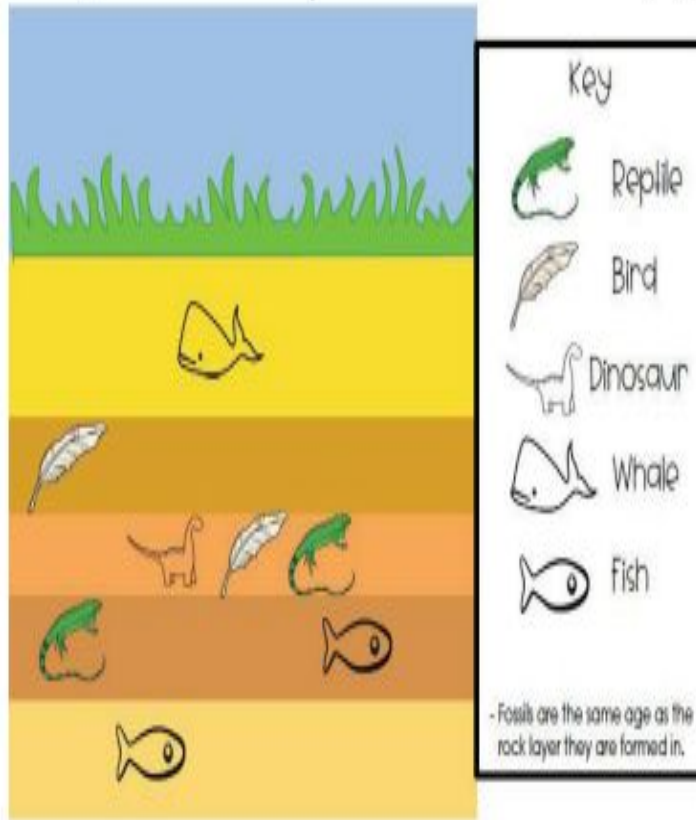


Which animal is shown to be around this area most recently, dinosaurs or birds? Explain why.

Remember that the fossils are the same age as the rock layer they formed in.

Practice #3:

Directions: Use the diagram and the key to answer the following questions.



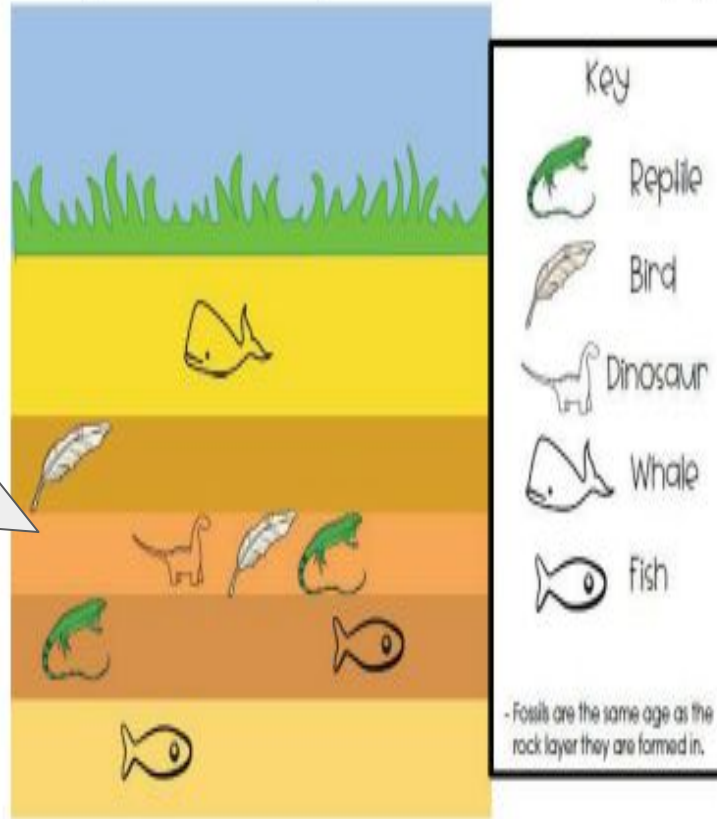
If you said
**BIRDS--GREAT
JOB!!!!**

Why? Because bird fossils are found in the second layer which occurred **AFTER** the third layer, where the dinosaurs are found.

Remember that the fossils are the same age as the rock layer they formed in.

Practice #3 answer:

Directions: Use the diagram and the key to answer the following questions.



Practice on your own:

- Take the [Study Jams](#) quiz about fossils
- If needed, watch the video, too!



The image shows a screenshot of an educational website page. At the top left, there is a logo for 'LANDFORMS, ROCKS & MINERALS'. The main title is 'Fossils' in large orange letters. Below the title is a paragraph of text: 'Fossils are preserved traces or remains of living things. Paleontologists who study fossils look for teeth, bones, shells, petrified wood, molds and casts, traces or carbon shadows, or even entire animals.' To the right of the text is a large image of a fossilized bird skeleton in a rock matrix. In the top right corner, there is a 'Print' button. Below the text, there are two buttons: a green circular 'Slide Show' button and a blue rectangular 'Test Yourself' button with a pencil icon. At the bottom left, there is a 'Key Vocabulary' section with two columns of terms: 'organism', 'excavation site', and 'sedimentary rock' in the first column; 'paleontology', 'fossil', and 'amber' in the second column.

LANDFORMS, ROCKS & MINERALS

Fossils

Fossils are preserved traces or remains of living things. Paleontologists who study fossils look for teeth, bones, shells, petrified wood, molds and casts, traces or carbon shadows, or even entire animals.

[Print](#)

[Slide Show](#)

[Test Yourself](#)

Key Vocabulary

- organism
- excavation site
- sedimentary rock
- paleontology
- fossil
- amber

Self Check:

Go tell someone in your home your answers.



1. Was this lesson?

- easy,
- just right
- hard

2. Take the [Brain Pop](#) quiz about fossils.

3. Share your score with someone at home!

