

A decorative border of musical notation surrounds the text. It features a treble clef at the top left, followed by a sequence of eighth and sixteenth notes on a five-line staff. The notes are arranged in a rectangular path, with some notes extending slightly beyond the lines of the staff.

Symphonic Orchestra

Lesson: April 7, 2020

Learning Target:

“I can identify and count basic rhythms”

A decorative border of musical notation surrounds the central text. The border consists of a single staff of music with various notes, including quarter, eighth, and sixteenth notes, and rests, arranged in a rectangular frame.

Warm-Up

A decorative border made of musical staves with various notes and symbols, including a treble clef at the top left and a bass clef at the bottom right. The notes are arranged in a rectangular frame around the central text.

Goal Warm-Up Review

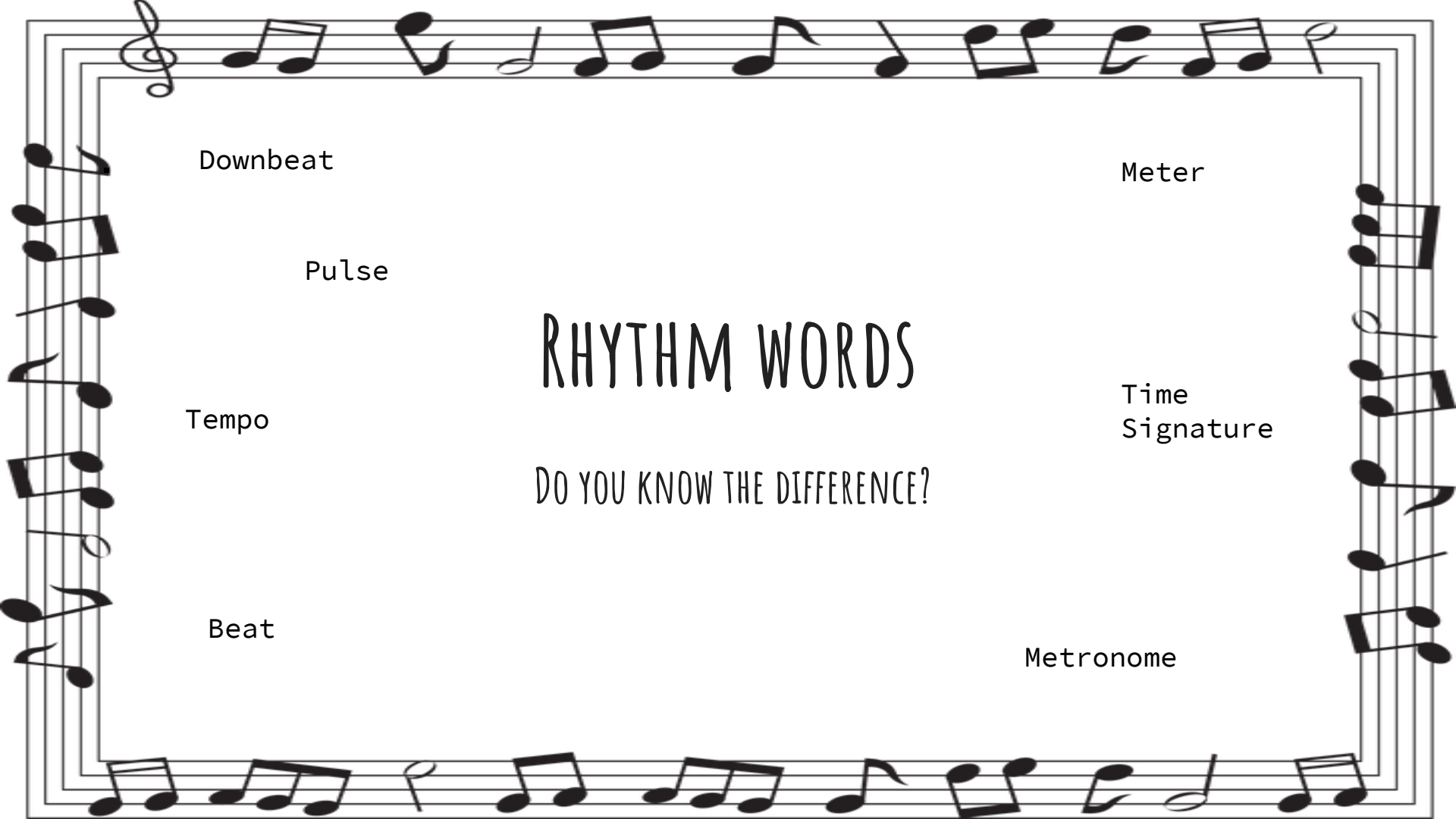
Consider your goal from yesterday. If necessary, change or modify your goal to best meet your needs.

Answer the following writing prompts:

1. My goal is important because.....
2. The benefit of achieving this goal is.....



Lesson



Downbeat

Meter

Pulse

RHYTHM WORDS

Tempo

Time
Signature

DO YOU KNOW THE DIFFERENCE?

Beat

Metronome



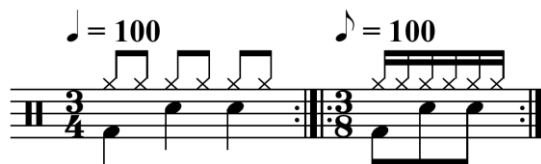
RHYTHM WORDS

- TIME SIGNATURE ($4/4$, $2/4$, $3/4$, $6/8$, $9/8$, ETC.)
 - HOW MANY BEATS ARE IN A MEASURE, AND
 - WHAT KIND OF NOTE GETS THE BEAT.
- PULSE ("FEELING THE BEAT")
- DOWNBEAT (THE FIRST BEAT OF EVERY MEASURE)
- TEMPO ("HOW FAST")
- METER ("STRONG" AND "WEAK" BEATS)



6
4

TIME SIGNATURES



3+2+3
8



WHAT DO THEY MEAN?

C

A decorative border made of musical staves with various notes and rests, framing the central text.

TIME SIGNATURES

6
4

TOP NUMBER = "HOW MANY" BEATS IN A MEASURE

BOTTOM NUMBER = "WHAT KIND" OF NOTE GETS
THE BEAT

A decorative border made of musical staves with various notes and rests, framing the central text.

TIME SIGNATURES

6
4

= 6 BEATS

= QUARTER NOTE GETS THE BEAT

DID YOU KNOW MUSIC IS LIKE MATH?
TIME FOR SOME WORD PROBLEMS



1. If you are in the time signature $4/4$, what kind of note gets the beat?
2. If you are in the time signature $5/8$, how many 8th notes are in a measure?
3. If you are in the time signature $3/4$, how many 8th notes are in a measure?

ANSWER KEY

1. If you are in the time signature $4/4$, what kind of note gets the beat?

The **QUARTER NOTE** gets the beat. The bottom number 4 means quarter note, an 8 would mean 8th note, 2 would mean half note, etc.

1. If you are in the time signature $5/8$, how many 8th notes are in a measure?

There are 5 eighth notes in $5/8$. Remember, top notes means how many... bottom note tells us we are counting eighth notes.

1. If you are in the time signature $3/4$, how many 8th notes are in a measure?

SIX!! The quarter note gets the beat.. and there are two eighth notes in every quarter note.. And we have 3 quarter notes in every measure in $3/4$.. I told you it was like math. :)



BEAT VALUE OF EACH NOTE (IN 4/4)

4/4

Whole Note = 4 beats

Half Note = 2 beats

Quarter Note = 1 beat

8th notes = half of a beat

16th notes = quarter of a beat



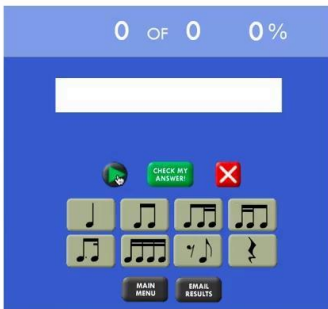
COUNTING AND WRITING RHYTHMS

WATCH THIS VIDEO FOR AN
EXPLANATION OF
COUNTING, WRITING AND
SAYING BASIC RHYTHMS!

The screenshot shows a video player interface with a timestamp of 1:21 PM on Tuesday, March 31. The video content displays a music theory example in 4/4 time. At the top, a staff of music shows a sequence of notes: four quarter notes, followed by a pair of eighth notes beamed together, then another pair of eighth notes beamed together, and finally a quarter note. Hand-drawn circles and arrows highlight these groups. Below the staff, the counts are written: '1 2 3 4' for the first four notes, '1 2' for the first pair of eighth notes, '3 4' for the second pair, and '1 2 3 4' for the final quarter note. Below this, four numbered staves (1-4) show different rhythmic patterns. Staff 1 is in common time (C) and shows a sequence of notes with counts: '2 3 4 | 1 2 3 1 2 3 4 1 3 1'. Staff 2 is in 5/4 time. Staff 3 is in 4/4 time. Staff 4 is in 6/8 time.

PRACTICE WRITING IN THE COUNTS (OR SAYING THE RHYTHM OUT LOUD) ON YOUR OWN!

[HTTP://STRINGSKILLS.COM/WP-CONTENT/RHYWKSHTPDFS/RHYWKSHT1.PDF](http://stringskills.com/wp-content/rhywkshtpdfs/rhywksht1.pdf)



WATCH THE TUTORIAL



The Rhythm Trainer is a free, Flash-based program for learning and practicing rhythm. There are two types of exercises: A Mode, where you click in the rhythm you hear, or B Mode, where you see a rhythm and choose the sound that matches. At the end of your session, you can email your results to anyone (for example, your teacher) and they can then see how you are doing.

Feel free to email me with comments, suggestions, or questions or just to say hello! at john@therhythmtrainer.com

If you'd like to help with hosting costs, please use the donate button below.



(c) copyright 2013, John Blank





Click to enable Adobe Flash Player

YOU MAY NEED TO
"ENABLE FLASH PLAYER"
OR "ALLOW FLASH TO
RUN"

THEN GO TO

WWW.THERHYTHMTRAINER.COM

FOR PRACTICE!



Review

HOW TO COUNT (AND SAY) EACH TYPE OF RHYTHM

4/4

1 | 1 3 | 1 2 3 4 | 1+ 2+ 3+ 4+ | 1 e + a 2 e + a 3 e + a 4 e + a

The image shows a musical staff with a 4/4 time signature. It is divided into eight measures by vertical bar lines. The first measure contains a whole note. The second measure contains two half notes. The third measure contains four quarter notes. The fourth measure contains four eighth notes, each followed by a plus sign. The fifth measure contains a beamed eighth note followed by a sixteenth note, then a plus sign, and this pattern repeats for the rest of the measure. The counting and syllable guides are written below the staff: '1' for the first measure, '1 3' for the second, '1 2 3 4' for the third, '1+ 2+ 3+ 4+' for the fourth, and '1 e + a 2 e + a 3 e + a 4 e + a' for the fifth through eighth measures.

A decorative border of musical notation surrounds the central text. The border consists of a single staff of music with various notes, including quarter, eighth, and sixteenth notes, as well as rests, arranged in a rectangular frame. The notes are black on a white background.

Self-Assessment



FIND SOME SHEET MUSIC FROM YOUR CONCERT MUSIC
OR SOME SHEET MUSIC ONLINE..

CAN YOU ACCURATELY COUNT ("SAY") THE RHYTHM?

A decorative border of musical notation surrounds the central text. The border consists of a single staff of music with various notes, including quarter, eighth, and sixteenth notes, and rests, arranged in a rectangular frame.

Additional Materials



USE THESE RESOURCES TO BECOME MORE ACCURATE WITH YOUR RHYTHMS!

[RHYTHM AND RHYTHM READING](#)

www.THERHYTHMTRAINER.COM

www.RHYTHMRANDOMIZER.COM

[GOOGLE METRONOME](#)