



# Visual Art Virtual Learning

Art Explorations- Georgia O'Keeffe

April 24, 2020



# Art Explorations

LESSON: April 24, 2020

**Objective/Learning Target: We will be coloring our southwest drawings.**

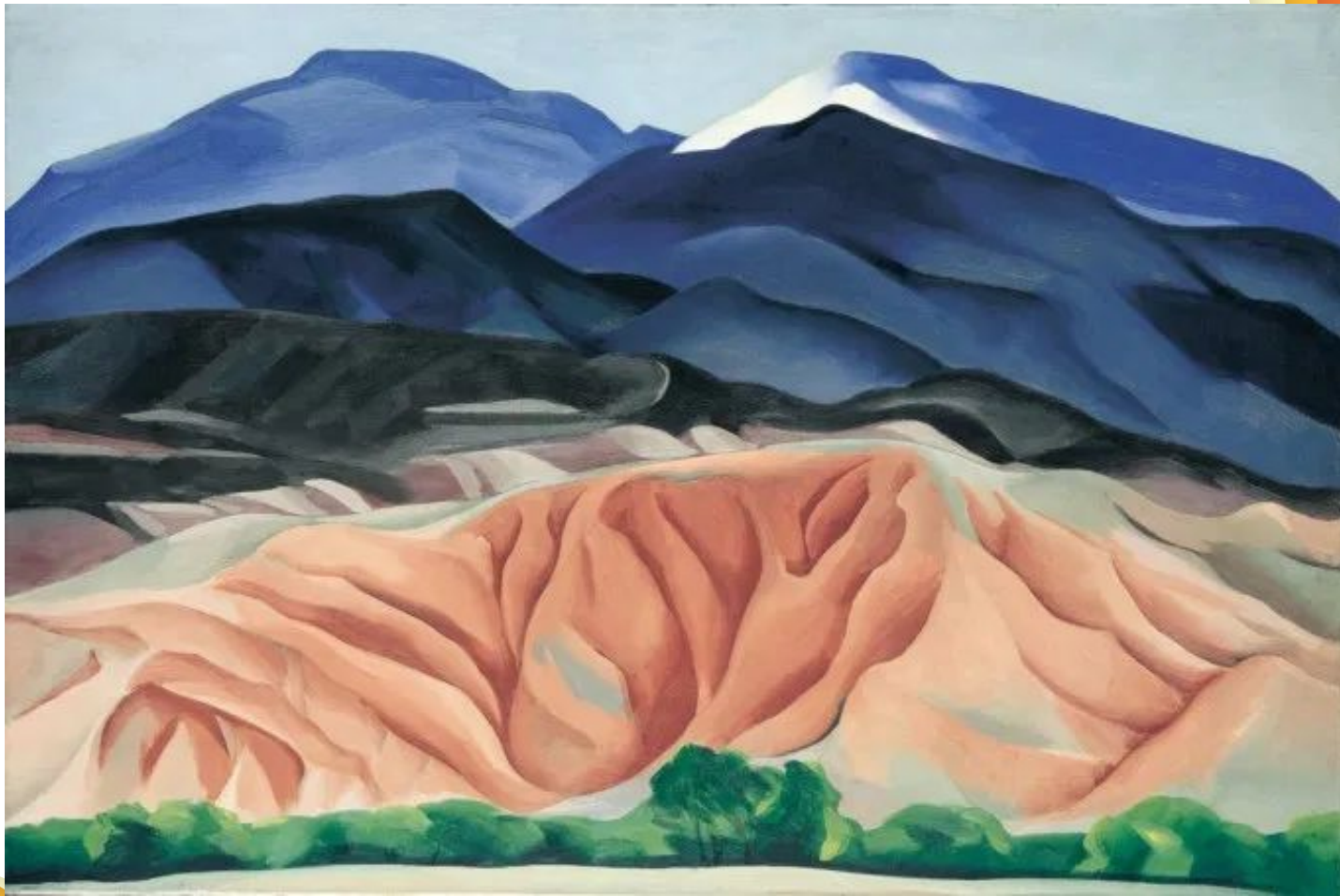
# Reminder of what we will be making.

Here is what you'll need for today:

- Colored pencils, crayons or markers

The following slides are some of Georgia O'Keeffe's landscapes of the southwest. I want you to take notice of the colors she used.





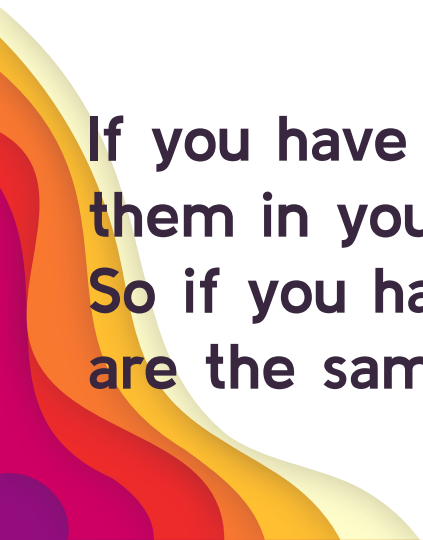






**What are some things you noticed about O'Keeffe's landscapes of the southwest?**

- O'Keeffe used a soft color palette.
- Her colors were not bright
- The colors had a more neutral look to them.

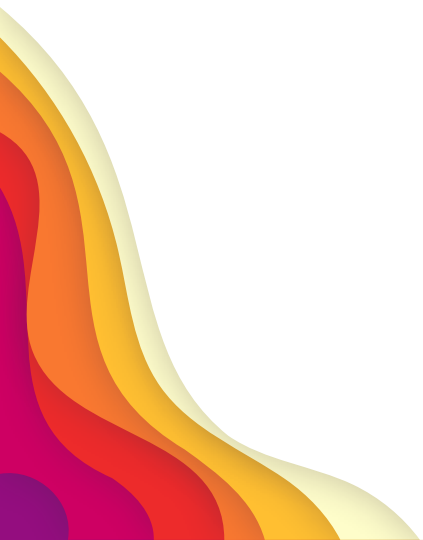


**If you have colors similar to what O'Keeffe used, try to use them in your patterns. Keep in mind patterns are repeated. So if you have green diamond, make sure all the diamonds are the same.**



**As you color the skull, refer back to the slide that shows the example of what we are drawing.**

- Notice that though the skull is mainly white, gray was used to create shadows.**
- Horns are colored a brown color.**



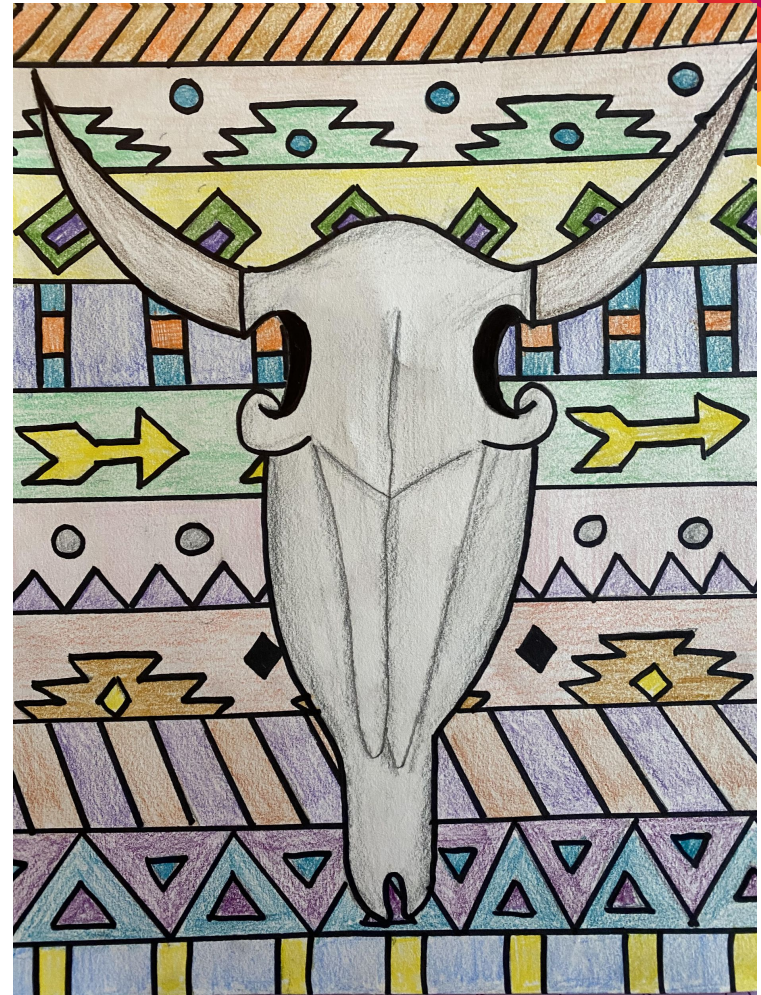


Here is what I came up with.

Notice my coloring is soft and in a more pastel color scheme.

I outlined the outside of the skull but not the middle part. This gives it a softer look.

I can't wait to see what you came up with!



**Please email me a picture of your finished southwest drawing.**

**[shannon\\_bown@isdschools.org](mailto:shannon_bown@isdschools.org)**

