

Art 1 - April 7, 2020

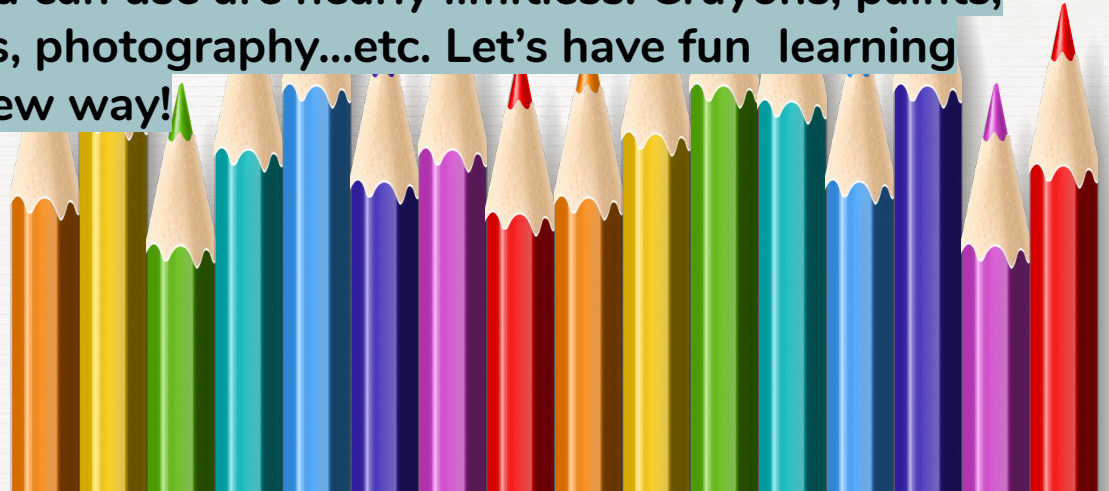
Learning Target - I can take a closer look at The Scream and hear different opinions about the piece. I will sketch out Munch's version for practice.



Art 1 - Virtual Learning

This week will learn about an artist named Edvard Munch and his most famous piece called The Scream. We will dissect this artwork which will allow you to see it in a whole new way.

Since some of you may not have the art supplies needed to create artwork, we will be learning about artists and if possible, recreating the piece. Mediums you can use are nearly limitless. Crayons, paints, colored pencils, pencils, photography...etc. Let's have fun learning about art in a whole new way!



Week 1, Day 2

4/7/20

What colors did the artist use?

What textures did he use?

What lines did he use?

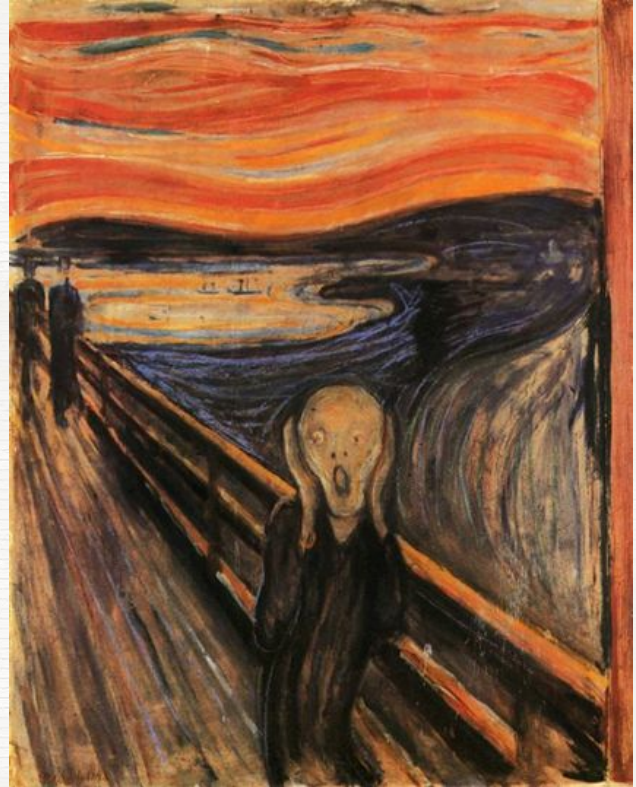
What shapes did he use?

Describe what you see in the artwork.

(2 sentences)

Do you like the piece? Why or why not?

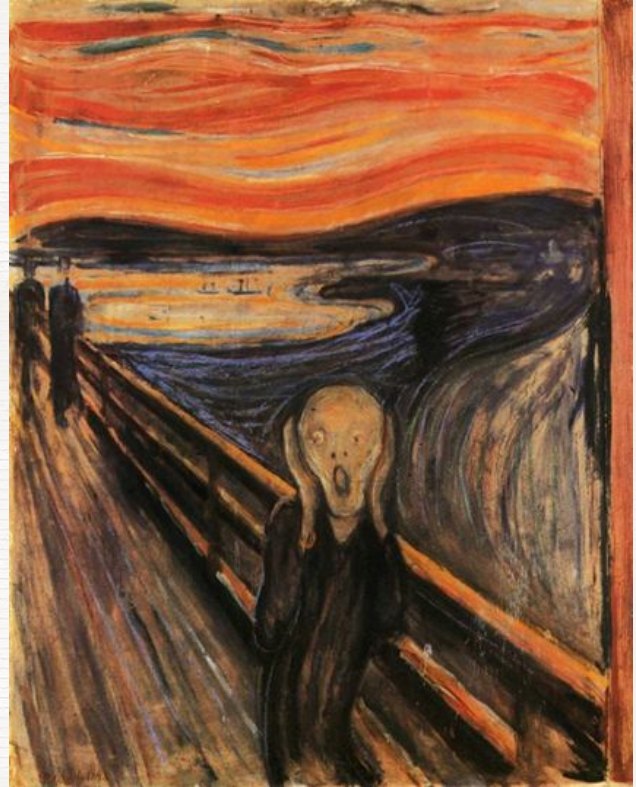
(1 sentence)



Week 1, Day 2

4/7/20

As you know The Scream is considered to create a mood while looking at it. No mood is wrong. Many people interpret this artwork differently. In the next slide are links of different perspectives of The Scream and more details about it. Feel free to jot down notes on what others think of the artwork.



Week 1, Day 2

4/7/20

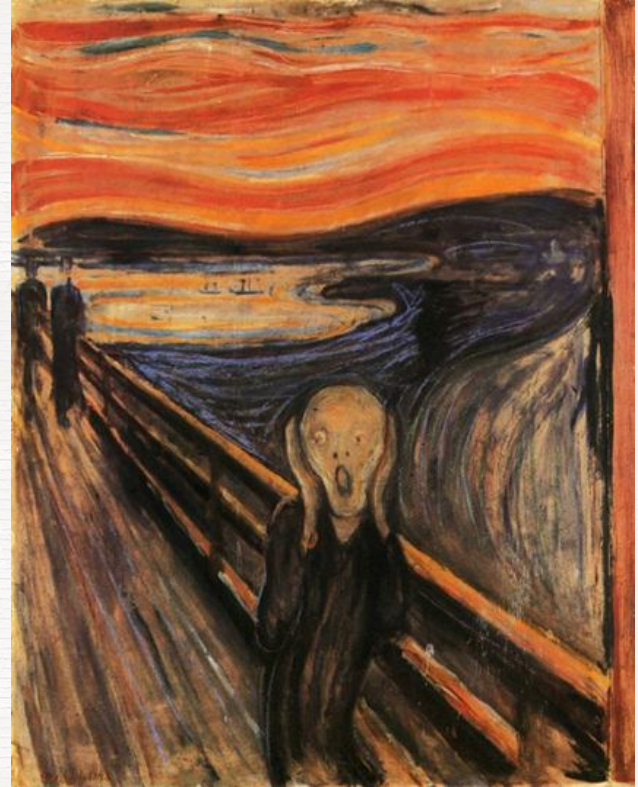
<https://www.youtube.com/watch?v=7rDLIM5Ezmk&t=230s>

<https://www.youtube.com/watch?v=7rDLIM5Ezmk&t=230s>

Below are links to videos on how to draw The Scream. Again please take notes and start thinking about how to create your own.

<https://www.youtube.com/watch?v=QWKY6ucY9LQ&t=64s>

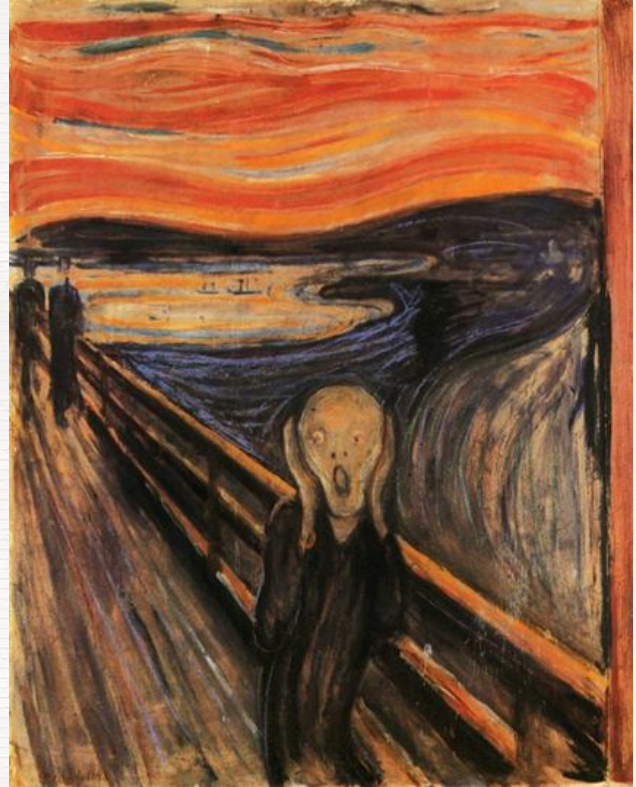
<https://www.youtube.com/watch?v=2m0MHGHgezA&list=PL6ERIlmFLT3fpUvxqw3YrpO9ZACasSyeG&index=5&t=14s>



Week 1, Day 2

4/7/20

Now I want you to try to sketch one out yourself. For today just focus on how Munch's version is laid out. Refer to the videos in the previous slide. Any paper and pencil will do. Remember to take your time and this exercise is for practice. Notice the diagonal lines that make the railing. This is important to add to your version. Notice they start closer together on the left side and they space out near the end. Also take notice that the figures on the left appear more like silhouettes. Feel free to email me the image when done.



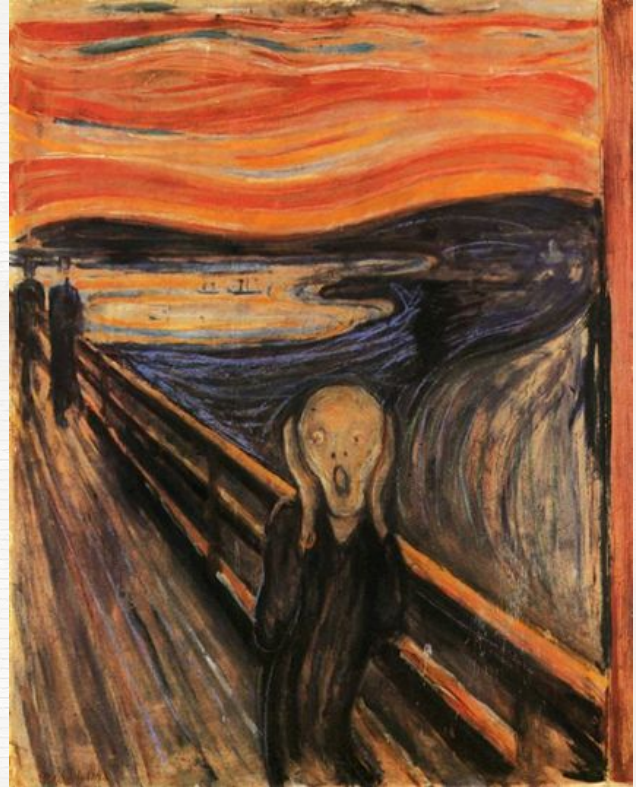
shannon_bown@idschools.org

Week 1, Day 2

4/7/20

Something to think about:

Tomorrow we will start our rough drafts of our own *Scream*. Be thinking about how you'd like yours to look. The background can be different. The subject screaming could look different. However I'd like to see the same composition or "layout." This means the screamer subject is located in the same place as the screamer in the original work.



Week 1, Day 2

4/7/20

If you have any questions
feel free to email me:
shannon_bown@idschools.org

