



CLASS: 6TH GRADE ART

April 23, 2020



THURSDAY

- Learning Target: How do artists interpret a work of art?

Are there different methods of interpretation?

The next step of criticism,
Interpretation, is also going to use your
"artist eyes."

Your experiences and beliefs will help you
form an opinion about what the artist was
trying to do/say. This is not your opinion
of how successful it is or whether you like
it or not. Interpretation is focused on the
meaning of the work.

You can revisit the criticism overview video here if you want a reminder of the interpretation step.

<https://www.youtube.com/watch?v=1b3CvtRMGtg>

These are some basic questions to use when doing a formal interpretation:

Interpretation: What is the artwork about? What is the artist trying to say?

Can I express what I think the artwork is about in one sentence?

What evidence from the artwork supports my interpretation?

You may express your opinion, but be able to support it using evidence from the artwork.

Use your intelligence and creativity; do not be afraid to interpret the work differently from your classmates.

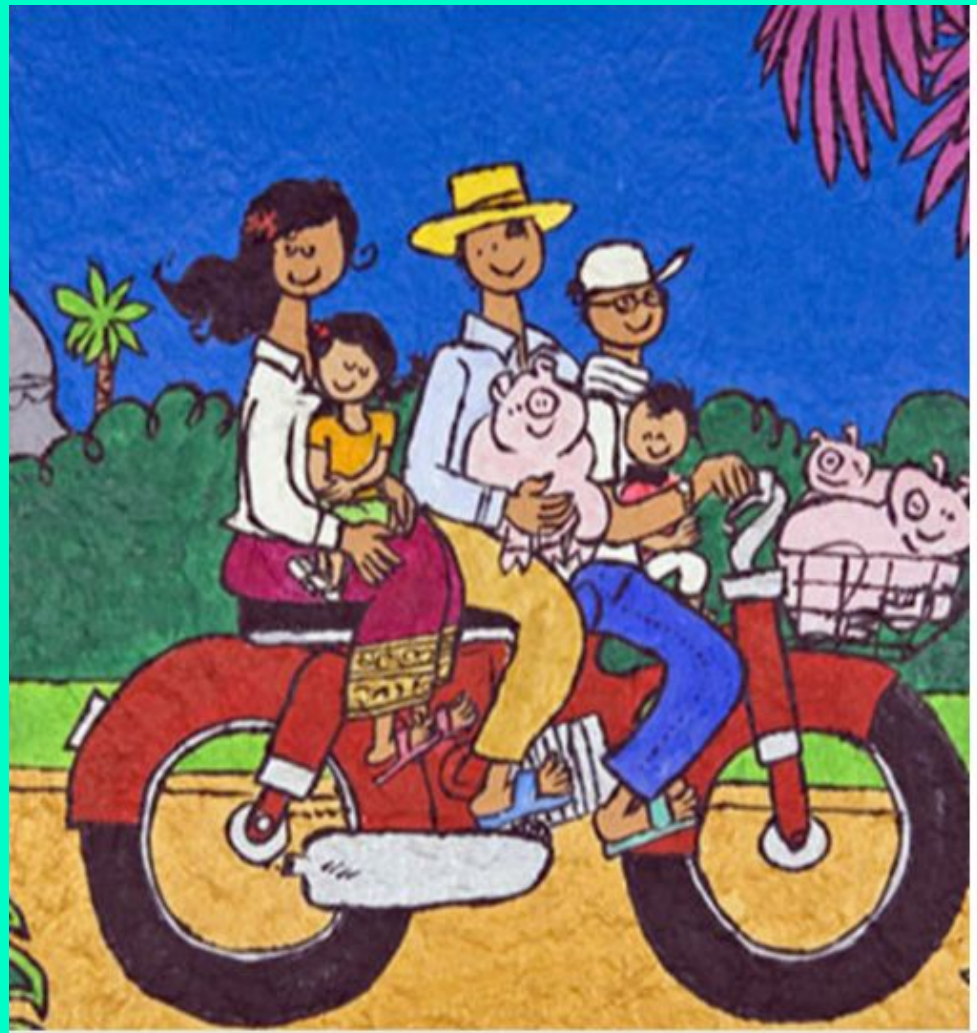
You can also talk about what makes the art important to you/society
OR
Explain what you think is going on in the work

Interpretation can be a little tricky to start, but it can also be the most imaginative part of criticism.

Here are some ideas to practice different *informal* methods of interpreting works. Try out each one and then decide what you think will work best for The Night Cafe.

Interpretation: Conversation

Write an imaginary conversation that would make sense for the characters in this image to have with each other.



Interpretation: Past Scene

Pretend you just hit pause while watching this show. Explain what happened right before this.



Interpretation:
Present Scene
Pretend you
just hit pause
while watching
this show.
Explain what is
happening right
now.



Interpretation:
Future Scene

Pretend you
just hit pause
while watching
this show.

Explain what is
going happen
next.



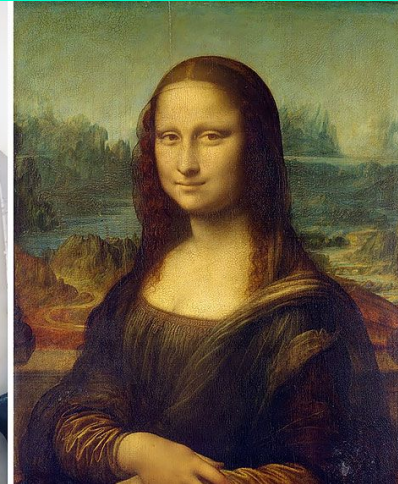
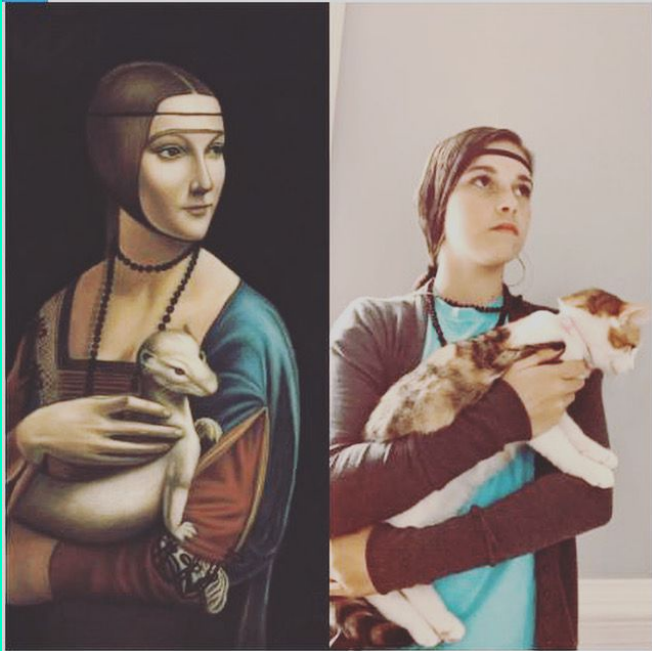
Let's look at
*The Night
Cafe* again.
Can you use
your
description
and analysis
to help you
INTERPRET
it?



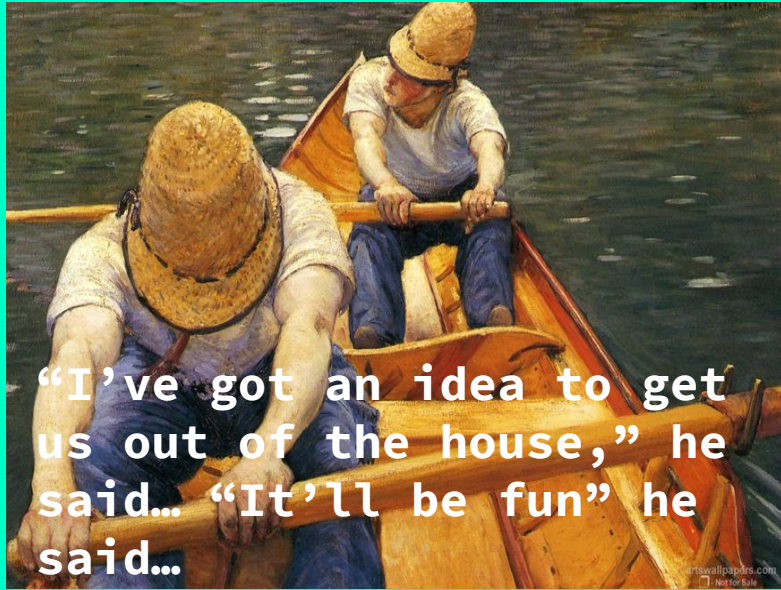
Write your interpretation(s) on a new piece of paper if there isn't room on the paper you've been using.

Try to be as detailed as you can and include evidence from the work.
(Make it obvious to others which work you are talking about by your references in your interpretation.)

More informal
interpretation methods:
Recreate Famous Art



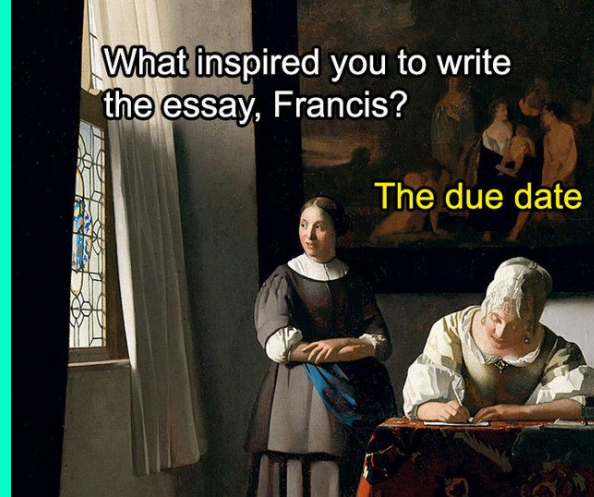
More ideas for *informal* methods of interpretation:



Art Memes



You are welcome to try these methods too!



HOW TO SHOW US YOUR CREATIONS...

*BE BOLD, BE SAFE, and TAKE
CARE OF YOU!*

*All the best,
Ms. Fields*

We'd love to see your
work!!!

Email your art teacher.

Bridger:
Jill_Fields@idschools.org

Nowlin:
shannon_bown@idschools.org