



Vocal Music Virtual Learning

**7/8 Choir**

**Key Signatures and Solfege**

May 13, 2020



7/8 Choir  
Lesson: 5/13/2020

**Objective/Learning Target:**

How to apply key signatures to solfege for sight reading



## Warm Up Activity:

Identify the 8 Solfege Syllables

What is the order of sharps? How does the order of flats compare?

Before we proceed, please identify the key signatures below:





## Sight Reading With Solfege

Solfege is a tool we use in order to help with reading music. Since we can't "see" our voices, it's helpful to have a tool when approaching new songs. The solfege syllables allow us to develop muscle memory for the pitches.

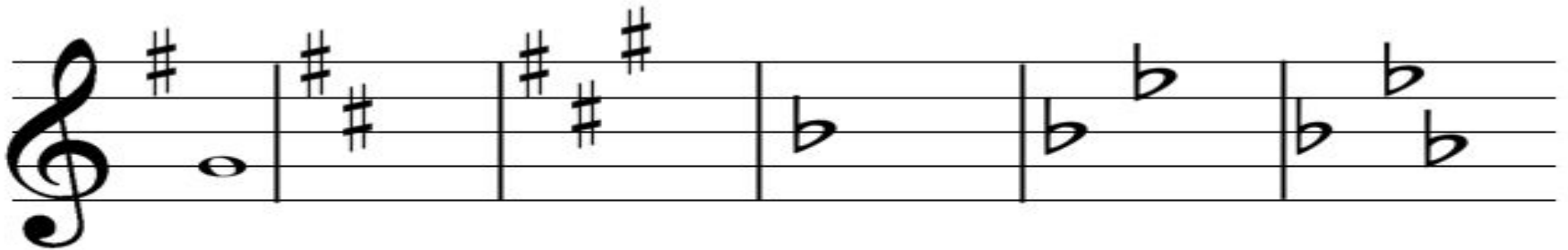
The solfege most people recognize (Do, Re, Mi, Fa, Sol, La, Ti, Do) is a major scale. There are other syllables we use for other scales, we'll worry about those later.

Each Key Signature we have learned represents a major scale based on the name of the Key. For example, the key of 1 sharp is the key of G. This means that a song in the key of G is comprised of a major scale based on G. This also means that G is Do

## Lets Practice

The first one is done for you. Please identify the Key, then indicate where “Do” is located on the staff.

You will be using your knowledge of note names of the treble clef, key signatures, and solfege to answer these questions.

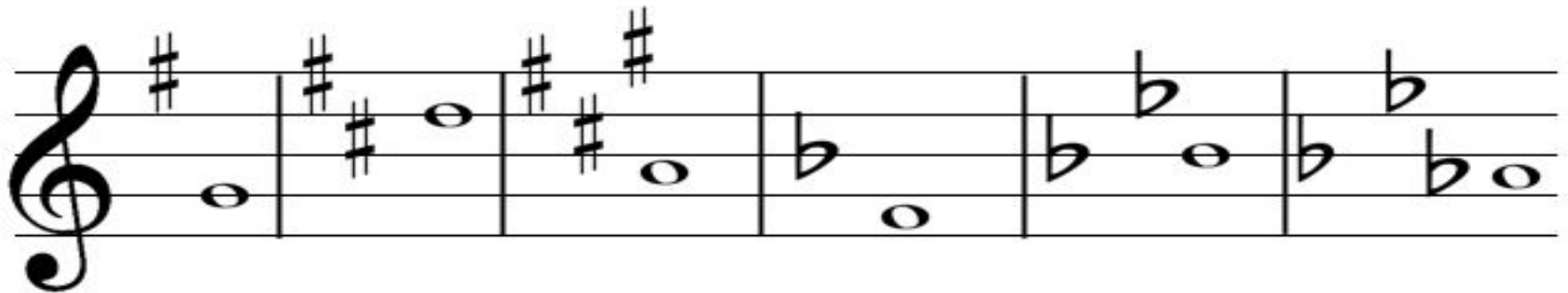


A musical staff in treble clef with six measures. The first measure contains a single note G with a sharp sign (#) above it. The second measure contains two notes: a sharp sign (#) above the first note and a sharp sign (#) below the second note. The third measure contains two notes: a sharp sign (#) above the first note and a sharp sign (#) below the second note. The fourth measure contains a single note with a flat sign (b) below it. The fifth measure contains two notes: a flat sign (b) below the first note and a flat sign (b) above the second note. The sixth measure contains two notes: a flat sign (b) below the first note and a flat sign (b) below the second note.

\_\_\_\_\_ G \_\_\_\_\_

Below are the keys as well as the line or space that “Do” is located on

Answers:



  G  

  D  

  A  

  F  

  B<sub>b</sub>  

  A<sub>b</sub>



Please don't forget this acronym, it can be helpful for identifying key signatures quickly if the method in the video is too confusing.

Sharps:

Go Dig And Eat Big Fat Clams

Flats:

Frank Brown Eats Apple Dumplings Grandma Cooked

\*notice that almost all the flat keys have a "flat" in the name, while most of the sharp keys don't





Please use the website below to do some extra practice. This time, select exercises, then Key Signature Identification. You should be able to add the remaining key signatures in the settings. If you feel comfortable identifying all 15 key signatures, try challenge mode!

[Music Theory-Key Signature Practice](#)



## Extra Practice:

Teoria is another good site for extra practice. It's pretty comprehensive, and offers in depth knowledge into many music theory topics. The reading music section is helpful for this topic, but there are many other topics to explore.

[Teoria Theory Practice](#)