



Guitar Virtual Learning

8th Grade Guitar

Music Theory

April 14, 2020

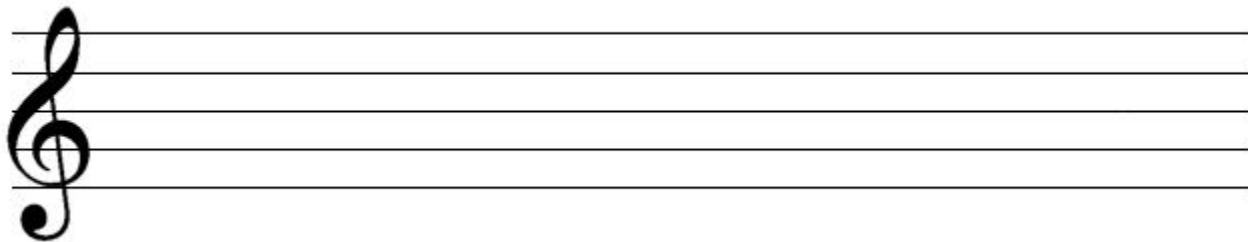


Lesson: 4/14/20

Objective/Learning Target:

Identifying Ledger Lines on the Treble Clef

Warm Up: Identify the Lines and Spaces of the Treble Clef



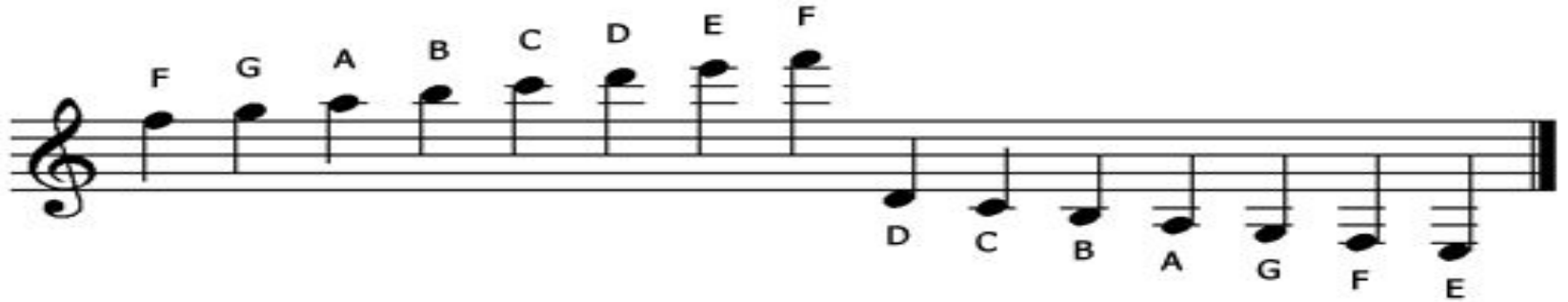


The best way to identify ledger lines is to alternate between lines and spaces going in alphabetical order. If you look at the example on the previous slide, the ledger lines above the treble clef starting on the top line (and alternating lines and spaces) are F,G,A,B,C,D,E,F. If you were to go below the treble staff, it goes in backwards alphabetical order. Starting with the bottom line, you have E,D,C,B,A,G,F,E.

Watch the video below for a more in depth explanation:

[Treble Clef Ledger Lines](#)

Due to a guitar's extended range, knowing ledger lines when reading standard notation is essential. Becoming acquainted with ledger lines will make reading music much more efficient and make practice much faster and more enjoyable.



Lets Practice!

Identify the note names below

A musical staff with a treble clef on the left. The staff contains eight notes: a quarter note on the first line (F4), a quarter note on the second space (G4), a quarter note on the third space (A4), a quarter note on the fourth space (B4), a quarter note on the first space of the next line (C5), a quarter note on the second space of the next line (D5), a quarter note on the third space of the next line (E5), and a quarter note on the fourth space of the next line (F5). Below the staff are eight horizontal lines, each aligned with a note above it, intended for writing the note names.



Answers:

C, B, A, F, D, A, G



Extra Practice:

Please use the website below to do some extra practice. If you feel good about identifying the treble clef lines and spaces, turn on challenge mode and see how many you can get right in a minute!

[Music Theory Practice](#)

At this point, you should be able to comfortably identify notes on the Treble Clef and ledger lines above and below the staff. Adjust the settings so that you can practice all of these components. If you have trouble with this, please don't hesitate to ask!