



Guitar Virtual Learning

8th Grade Guitar

Music Literacy Review

May 7, 2020



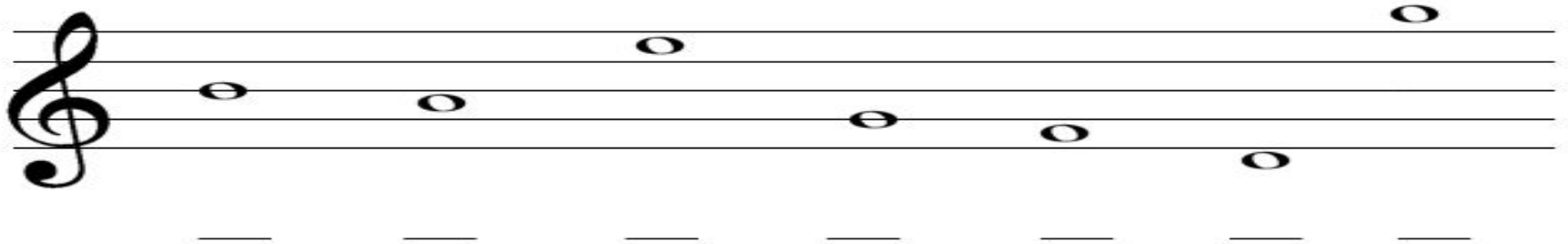
8th Grade Guitar

Lesson: 5/7/2020

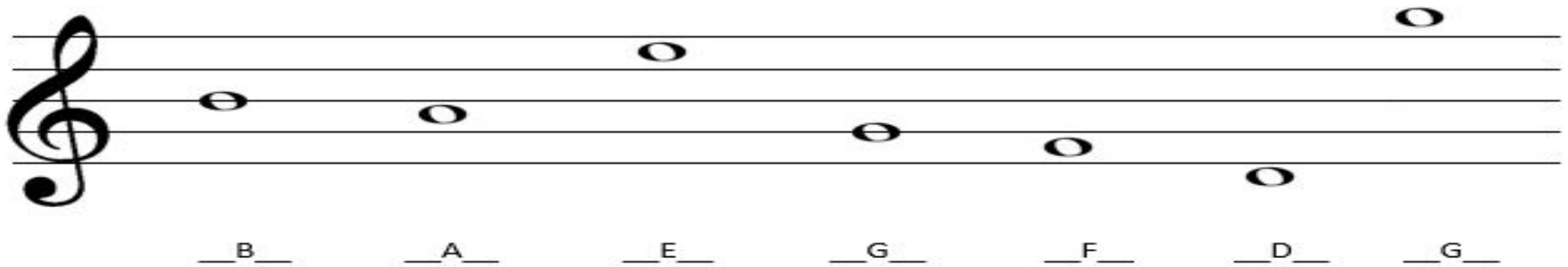
Objective/Learning Target:

Reviewing Note Identification, Accidentals, and Key Signatures

Warm Up Activity:
Identify the Lines and Spaces for the Treble Clef



Answers:



Identify the Key Signatures
(don't forget to include accidentals where they're needed)



— — — — — — — —



— — — — — — — —

Answers:

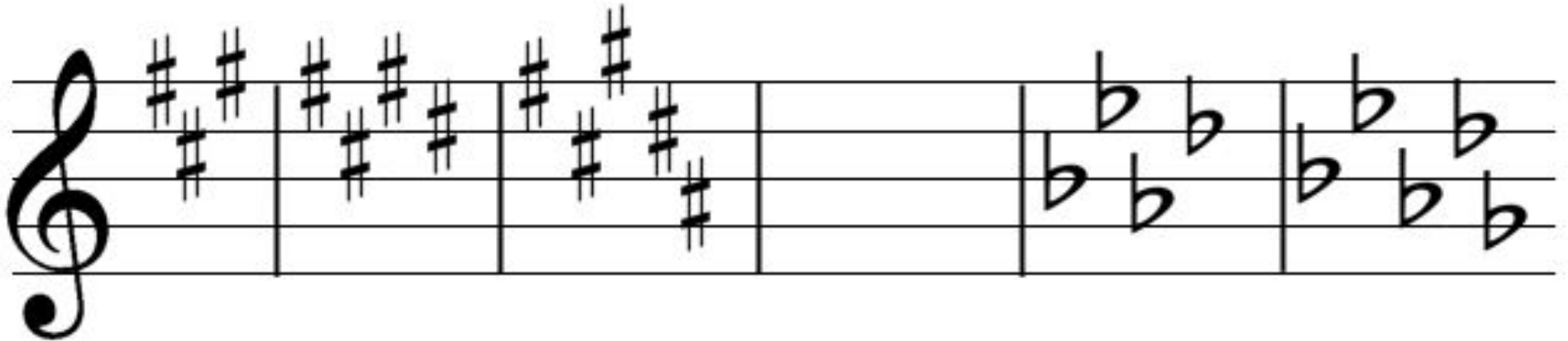
Musical notation for major chords with sharps. The notation is presented in two staves: a treble clef staff on top and a bass clef staff on the bottom. Each staff contains eight measures, one for each chord. The chords are labeled in blue text below the treble staff. The notes for each chord are shown as black stems with sharp symbols (#) on the appropriate lines or spaces. The chords are: C Major, G Major, D Major, A Major, E Major, B Major, F# Major, and C# Major.

Chord	Treble Clef Notes	Bass Clef Notes
C Major	C4, E4, G4	C3, E3, G3
G Major	B3, D4, F#4	G2, B2, D3
D Major	F#4, A4, C#5	D2, F#2, A2
A Major	C#5, E5, G#5	A2, C#3, E3
E Major	G#5, B5, C#6	E2, G#3, B3
B Major	C#6, D#6, F#6	B2, C#3, D#3
F# Major	D#6, F#6, A#6	F#2, A2, C#3
C# Major	F#6, G#6, A#6	C#2, E3, G#3

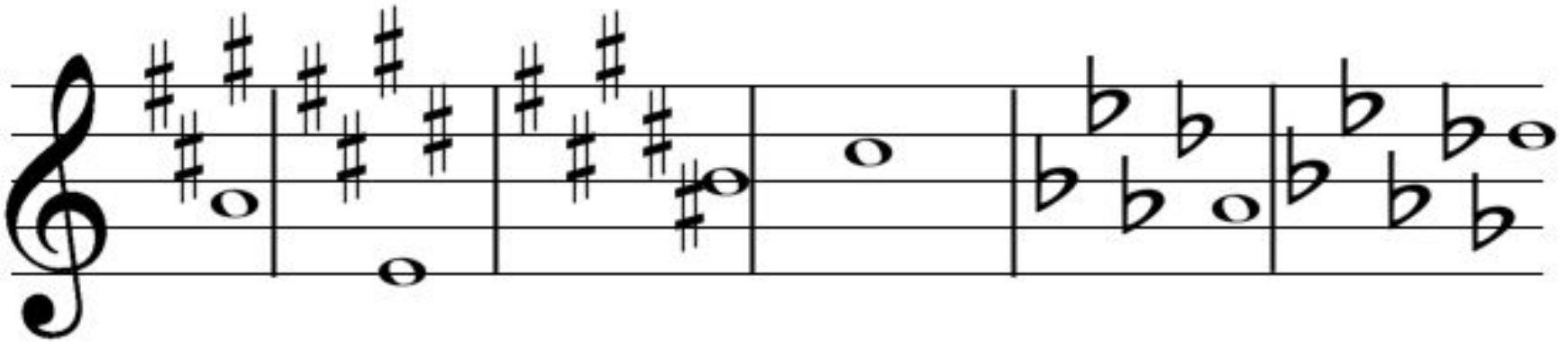
Musical notation for major chords with flats. The notation is presented in two staves: a treble clef staff on top and a bass clef staff on the bottom. Each staff contains seven measures, one for each chord. The chords are labeled in blue text below the treble staff. The notes for each chord are shown as black stems with flat symbols (b) on the appropriate lines or spaces. The chords are: F Major, Bb Major, Eb Major, Ab Major, Db Major, Gb Major, and Cb Major.

Chord	Treble Clef Notes	Bass Clef Notes
F Major	A4, C5, F5	F3, A3, C4
Bb Major	D4, F4, Bb4	Bb2, D3, F3
Eb Major	G3, Bb3, Eb4	Eb2, G2, Bb2
Ab Major	Bb3, D4, F4	Ab2, Bb2, D3
Db Major	C4, Eb4, G4	Db2, Eb2, G2
Gb Major	D4, F4, Bb4	Gb2, Bb2, D3
Cb Major	E4, G4, Bb4	Cb2, Eb2, G2

For this review, please complete two things. First, identify which notes are sharp/flat then identify the key and where Do is supposed to go.



Answers:



F_C_G_

Key of A

F_C_G_D_

Key of E

F_C_G_D_A_

Key of B

none_

Key of C

B_E_A_D_

Key of A^b

B_E_A_D_G_

Key of D^b



Please don't forget this acronym, it can be helpful for identifying key signatures quickly if the method in the video is too confusing.

Sharps:

Go Dig And Eat Big Fat Clams

Flats:

Frank Brown Eats Apple Dumplings Grandma Cooked

*notice that almost all the flat keys have a "flat" in the name, while most of the sharp keys don't



Please use the website below to do some extra practice. This time, select exercises, then Key Signature Identification. You should be able to add the remaining key signatures in the settings. If you feel comfortable identifying all 15 key signatures, try challenge mode!

[Music Theory-Key Signature Practice](#)



Extra Practice:

Teoria is another good site for extra practice. It's pretty comprehensive, and offers in depth knowledge into many music theory topics. The reading music section is helpful for this topic, but there are many other topics to explore.

[Teoria Theory Practice](#)