

A decorative border made of musical staves and notes surrounds the text. The top staff starts with a treble clef and contains a sequence of notes. The bottom staff also contains a sequence of notes. The left and right sides feature vertical staves with notes, some of which are beamed together.

6th Grade Orchestra

Lesson: April 7, 2020

Learning Target:

“I can identify and count basic rhythms”

A decorative border of musical notation surrounds the central text. The border consists of a single staff of music with various notes, including quarter, eighth, and sixteenth notes, and rests, arranged in a rectangular frame.

Warm-Up

A decorative border of musical notation surrounds the text. It features a treble clef at the top left, a bass clef at the bottom left, and various notes and rests on a five-line staff that forms a rectangular frame.

Goal Warm-Up Review

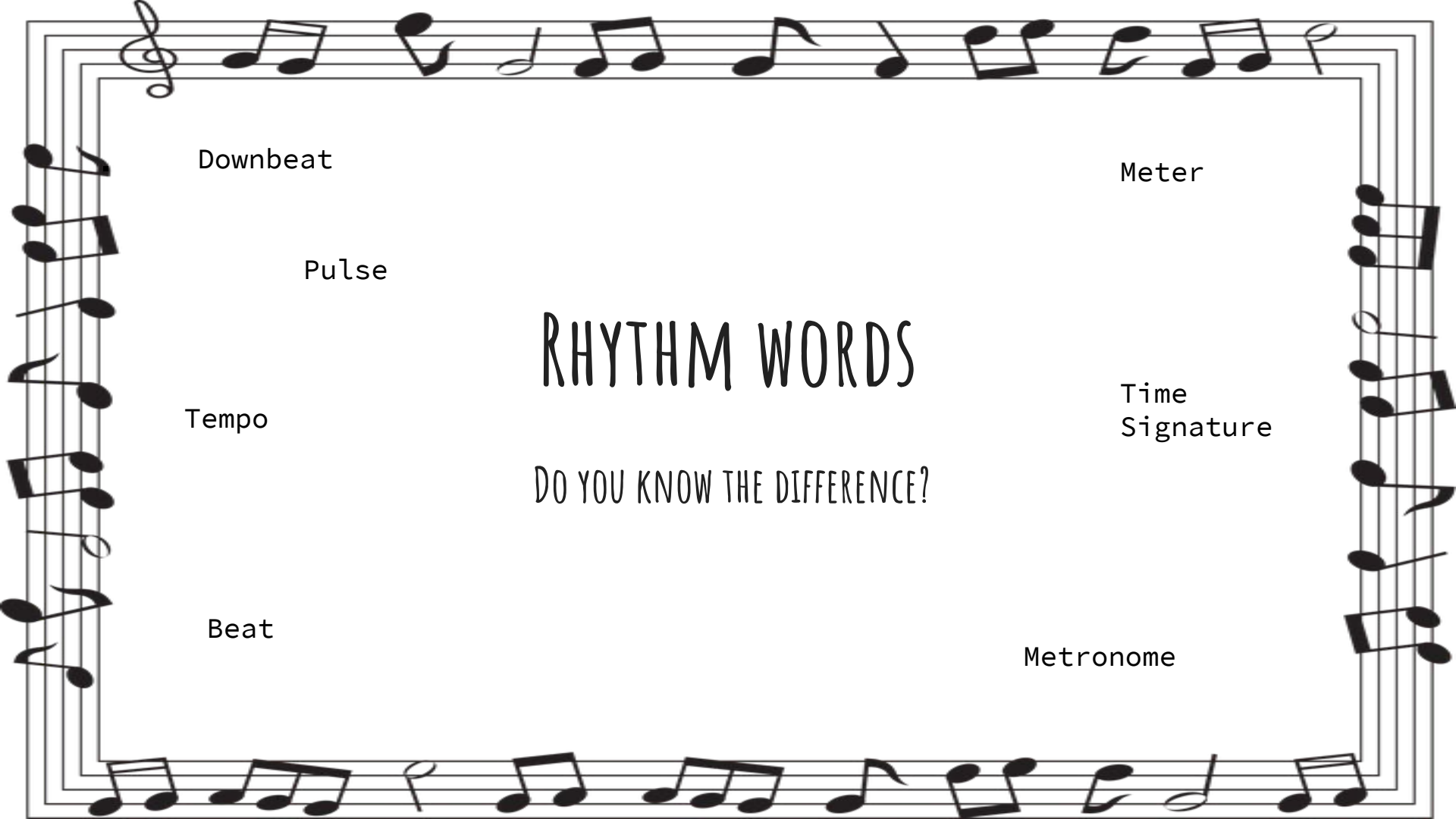
Consider your goal from yesterday. If necessary, change or modify your goal to best meet your needs.

Answer the following writing prompts:

1. My goal is important because.....
2. The benefit of achieving this goal is.....



Lesson



Downbeat

Meter

Pulse

RHYTHM WORDS

Tempo

Time
Signature

DO YOU KNOW THE DIFFERENCE?

Beat

Metronome

A decorative border of musical notation surrounds the text. It features a treble clef at the top left, a bass clef at the bottom left, and various note values including quarter, eighth, and sixteenth notes, as well as rests, arranged in a rectangular frame.

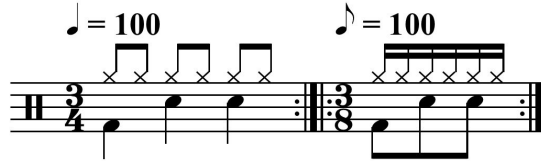
RHYTHM WORDS

- TIME SIGNATURE (4/4, 2/4, 3/4, 6/8, 9/8, ETC.)
 - HOW MANY BEATS ARE IN A MEASURE, AND
 - WHAT KIND OF NOTE GETS THE BEAT.
- PULSE ("FEELING THE BEAT")
- DOWNBEAT (THE FIRST BEAT OF EVERY MEASURE)
- TEMPO ("HOW FAST")
- METER ("STRONG" AND "WEAK" BEATS)



6
4

TIME SIGNATURES



3+2+3
8



WHAT DO THEY MEAN?

C

A decorative border made of musical staves with various notes and rests. The top staff starts with a treble clef. The notes include quarter, eighth, and sixteenth notes, some beamed together, and rests.

TIME SIGNATURES

6
4

TOP NUMBER = "HOW MANY" BEATS IN A MEASURE

BOTTOM NUMBER = "WHAT KIND" OF NOTE GETS
THE BEAT

A decorative border of musical notation surrounds the central text. The border consists of a single staff with various notes, including quarter, eighth, and sixteenth notes, some with stems and beams, arranged in a rectangular path.

TIME SIGNATURES

6
4

= 6 BEATS

= QUARTER NOTE GETS THE BEAT



DID YOU KNOW MUSIC IS LIKE MATH?

TIME FOR SOME WORD PROBLEMS



1. If you are in the time signature $4/4$, what kind of note gets the beat?
2. If you are in the time signature $5/8$, how many 8th notes are in a measure?
3. If you are in the time signature $3/4$, how many 8th notes are in a measure?

ANSWER KEY

1. If you are in the time signature $4/4$, what kind of note gets the beat?

The **QUARTER NOTE** gets the beat. The bottom number 4 means quarter note, an 8 would mean 8th note, 2 would mean half note, etc.

2. If you are in the time signature $5/8$, how many 8th notes are in a measure?

There are **5 eighth notes** in $5/8$. Remember, top notes means how many... bottom note tells us we are counting eighth notes.

3. If you are in the time signature $3/4$, how many 8th notes are in a measure?

SIX!! The quarter note gets the beat.. and there are two eighth notes in every quarter note.. And we have 3 quarter notes in every measure in $3/4$.. I told you it was like math. :)



BEAT VALUE OF EACH NOTE (IN 4/4)

4/4

Whole Note = 4 beats

Half Note = 2 beats

Quarter Note = 1 beat

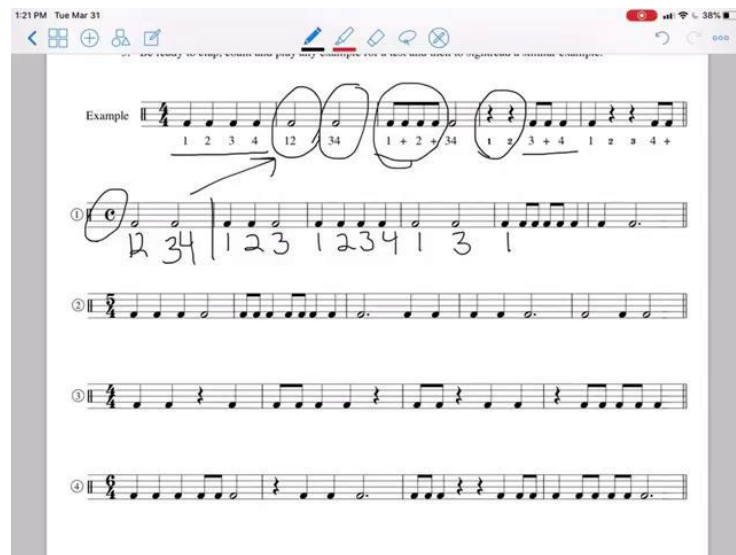
8th notes = half of a beat

16th notes = quarter of a beat



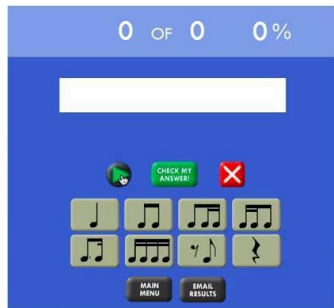
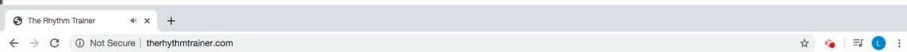
COUNTING AND WRITING RHYTHMS

WATCH THIS VIDEO FOR AN
EXPLANATION OF
COUNTING, WRITING AND
SAYING BASIC RHYTHMS!



PRACTICE WRITING IN THE COUNTS (OR SAYING THE RHYTHM OUT LOUD) ON YOUR OWN!

[HTTP://STRINGSKILLS.COM/WP-CONTENT/RHYWKSHTPDFS/RHYWKSHT1.PDF](http://stringskills.com/wp-content/rhythmshtpdfs/rhythmsht1.pdf)



WATCH THE TUTORIAL



The Rhythm Trainer is a free, Flash-based program for learning and practicing rhythm. There are two types of exercises: A Mode, where you click in the rhythm you hear, or B Mode, where you see a rhythm and choose the sound that matches. At the end of your session, you can email your results to anyone (for example, your teacher) and they can then see how you are doing.

Feel free to email me with comments, suggestions, or questions or just to say hello! at john@therhythmtrainer.com

If you'd like to help with hosting costs, please use the donate button below.



(c) copyright 2013, John Blank





Click to enable Adobe Flash Player

YOU MAY NEED TO
"ENABLE FLASH PLAYER"
OR "ALLOW FLASH TO
RUN"

THEN GO TO

www.THERHYTHMTRAINER.COM

FOR PRACTICE!

A decorative border of musical notation surrounds the central text. The border consists of a single staff of music with various notes, including quarter, eighth, and sixteenth notes, and rests, arranged in a rectangular frame. The notes are black on a white background.

Review

HOW TO COUNT (AND SAY) EACH TYPE OF RHYTHM

4/4

1 | 1 3 | 1 2 3 4 | 1+ 2+ 3+ 4+ | 1 e + a 2 e + a 3 e + a 4 e + a

The diagram illustrates a 4/4 time signature with a central staff. The staff is divided into four measures by vertical bar lines. The first measure contains a single whole note. The second measure contains two half notes. The third measure contains four quarter notes. The fourth measure contains eight eighth notes. Below the staff, the counting and syllable cues are provided for each measure: '1' for the whole note, '1 3' for the two half notes, '1 2 3 4' for the four quarter notes, and '1+ 2+ 3+ 4+' for the eighth notes. The eighth notes are grouped into four pairs, each with a syllable cue: '1 e + a', '2 e + a', '3 e + a', and '4 e + a'. The entire staff is framed by a decorative border of musical notes and stems.

A decorative border of musical notation surrounds the central text. The border consists of a single staff of music with various notes, including quarter, eighth, and sixteenth notes, as well as rests, arranged in a rectangular frame. The notes are black on a white background.

Self-Assessment



FIND SOME SHEET MUSIC FROM YOUR CONCERT MUSIC
OR SOME SHEET MUSIC ONLINE..

CAN YOU ACCURATELY COUNT ("SAY") THE RHYTHM?

A decorative border of musical notation surrounds the central text. The border consists of a single staff of music with various notes, including quarter, eighth, and sixteenth notes, as well as rests. The staff is oriented horizontally at the top and bottom, and vertically on the left and right sides. The notes are black on a white background.

Additional Materials



USE THESE RESOURCES TO BECOME MORE ACCURATE WITH YOUR RHYTHMS!

[RHYTHM AND RHYTHM READING](#)

www.THERHYTHMTRAINER.COM

www.RHYTHMRANDOMIZER.COM

[GOOGLE METRONOME](#)